

TRIUMPH-1

216 channels

GPS + GLONASS + Galileo



TRACY versatile and
JUSTIN comprehensive
GIODIS survey systems

**Better than 30 cm GIS... instantly
or 5 cm static**



Actual size

GISmore

stand-alone or
inside the hat

**Bluetooth wireless
connection
to GISmore**

- GPS L1
- Galileo E1
- GLONASS L1
- 100 Hz update rate
- 100 Hz update rate
- RAIM
- WAAS/EGNOS
- Rechargeable Li-Ion Battery
- GNSS Antenna
- GSM Module
- Bluetooth® Interface
- Bluetooth/GSM Antenna



**Many
ways
to use**

All boards shown in their actual sizes

Eurocard Form Factor



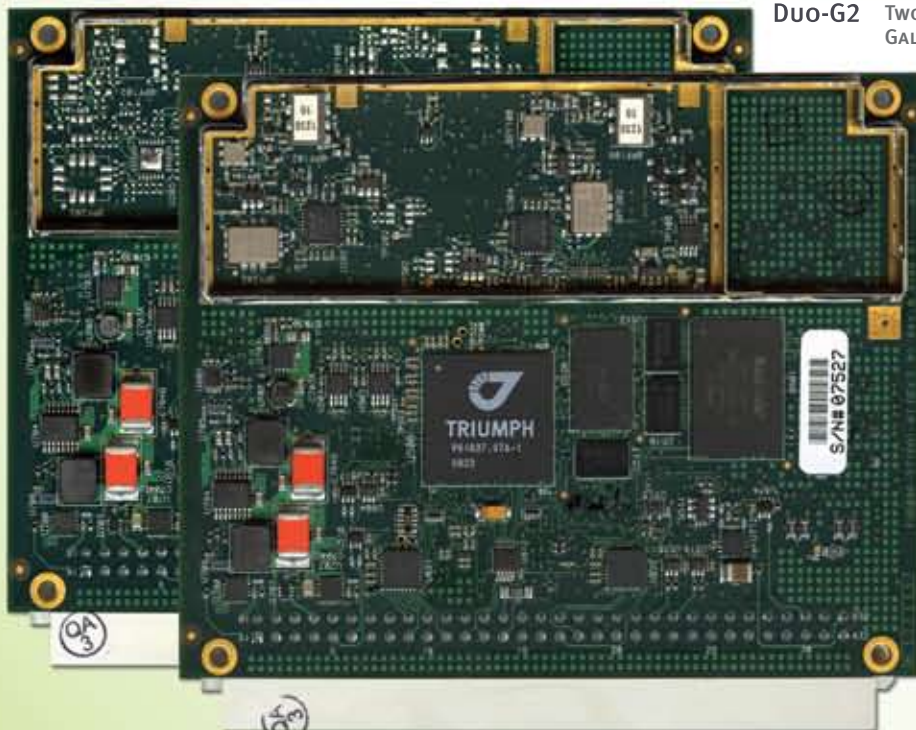
TR-G2T
16 EACH OF GPS L1/L2/L2C/L5, GALILEO E1/E5A



TR-G2 16 EACH OF GPS L1, GALILEO E1

TR-G3 16 EACH OF GPS L1, GALILEO E1, GLONASS L1

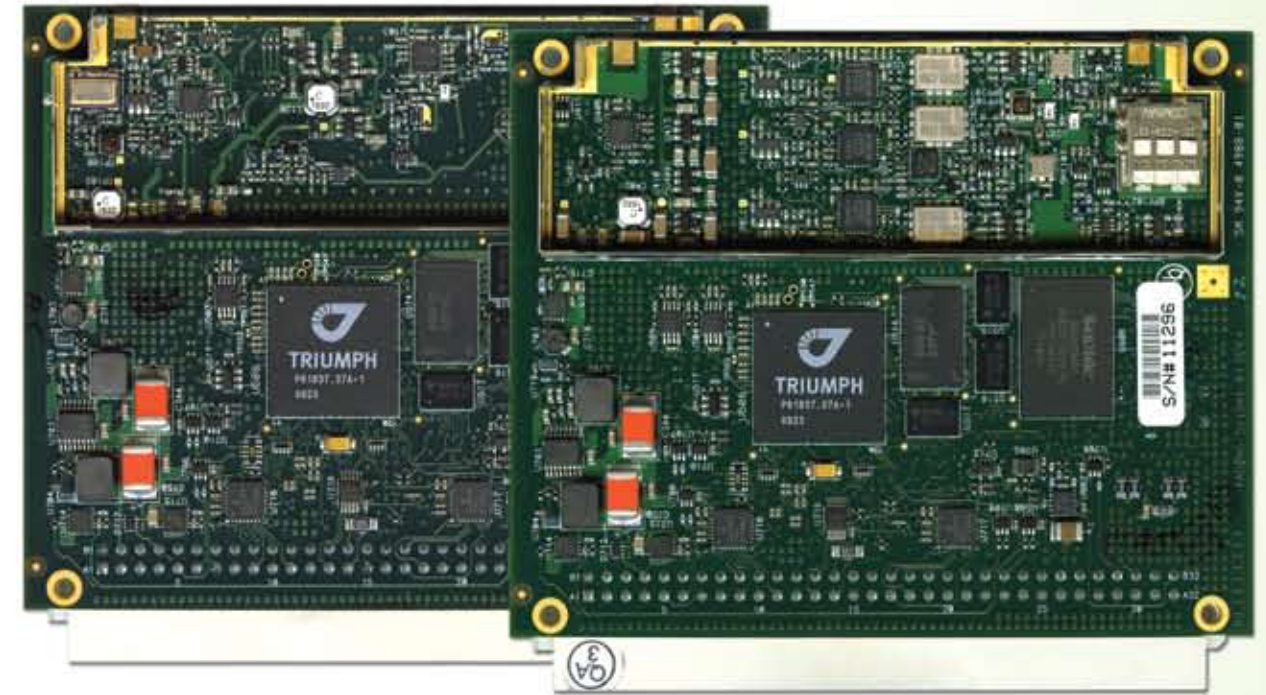
TR-G3T 16 EACH OF GPS L1/L2/L2C/L5, GALILEO E1/E5A, GLONASS L1/L2



Duo-G2 TWO SETS OF 14 EACH OF GPS L1, GALILEO E1

Duo-G2D
TWO SETS OF 14 EACH OF GPS L1/L2, GALILEO E1

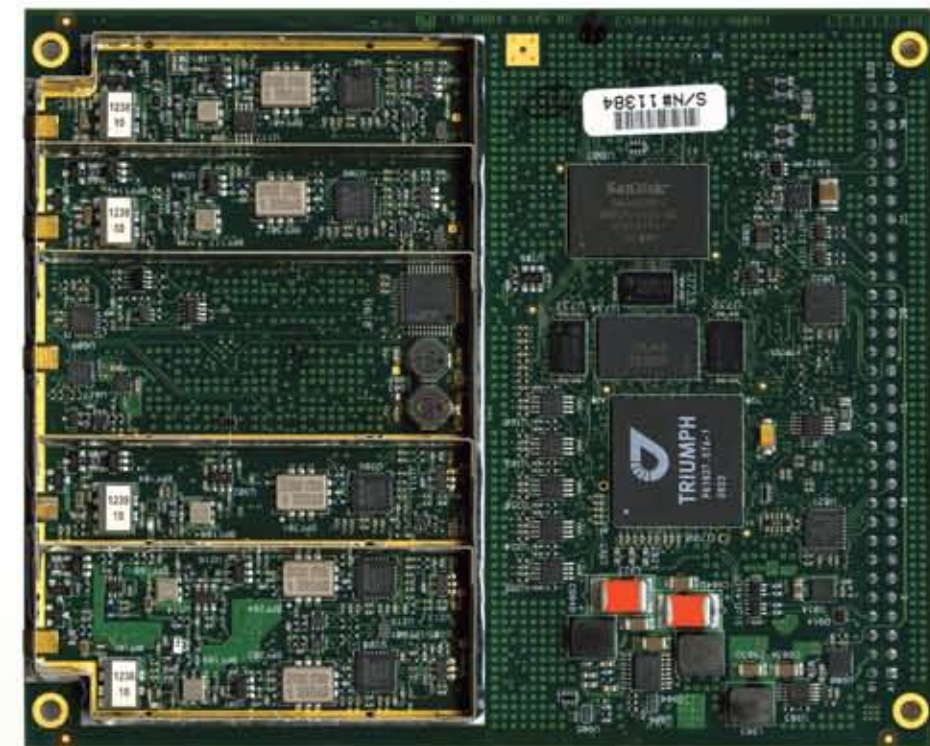
Based on 216-channel TRIUMPH chip, our family of nine OEM boards can support you in any GNSS application... now and in the future.



TRE-G2T 16 EACH OF GPS L1/L2/L2C/L5, GALILEO E1/E5A

TRE-G3T 16 EACH OF GPS L1/L2/L2C/L5, GALILEO E1/E5A, GLONASS L1/L2

For the first time in the GNSS history we offer up to 100 Hz RTK.



QUATTRO-G3D
ONE SET OF 14 EACH OF GPS L1/L2, GALILEO E1, GLONASS L1/L2; AND THREE SET OF 14 EACH OF GPS L1/L2, GALILEO E1

Quattro-G3D is a 100x120 mm Eurocard board that accepts inputs from up to four antennas.

Smaller than a full Eurocard size, it is equivalent of four receivers which operate synchronously with a common oscillator and central processor to coordinate all communications and other activities.

Duo... 2-in-1

Quattro... 4-in-1

TRE-G3T with Anti-Jamming capability



The anti-jamming capabilities of TRE-G3T-AJ basically eliminates the interferences (typical of harmonics of TV and radio stations, etc) which fall within any GNSS signal.

TRE-G3T-AJ

HAS THE ANTI-JAMMING CAPABILITY
16 EACH OF GPS L1/L2/L2C/L5, GALILEO E1/E5A,
GLONASS L1/L2

Boxed Version



ALPHA

- INTERNAL BATTERY
- CHARGER
- GSM
- BLUETOOTH

FOR: TR-G3, TR-G2T,
TR-G3T



Front panel connectors:

Power Input + serial port A + USB + Antenna

Back panel connectors:

Can have up to 3 connectors of 1-PPS
• Event Marker • IRIG • GSM Antenna
(without Bluetooth antenna).

When Bluetooth antenna is installed only one extra connector can be installed.

Example 1: BT Antenna + GSM Antenna

Example 2: 1-PPS output + Event Marker + GSM Antenna

DELTA

FOR: TRE-G2T, TRE-G3T,
Duo-G2, Duo-G2D,
QUATTRO-G3D



Front panel connectors:

Option 1: Power Input + Serial A + Serial B + Serial C + Antenna

Option 2: Power Input + USB + Serial A + Serial C + Antenna

Options 3: Power Input + USB + Serial A + Serial C + Ethernet

Back panel connectors:

Can have up to 4 connector of 1-PPS A • 1-PPS B • Event A • Event B • Antenna • CAN • IRIG

Example: 1-PPS A + 1-PPS B + Event A + Event B

SIGMA

- INTERNAL BATTERY
- CHARGER
- MODEM
- GSM
- BLUETOOTH

FOR: TRE-G2T, TRE-G3T,
Duo-G2, Duo-G2D,
QUATTRO-G3D



Front panel connectors:

Can have Power Input • Second Power Input • USB • Serial A • Serial B or C • Ethernet

and up to 4 connectors of 1-PPS A • 1-PPS B • Event A • Event B • Antenna • CAN • IRIG • RS422

Back panel connectors:

Can have SIM door and GSM Antenna connector and up to 4 connectors of 1-PPS A • 1-PPS B • Event A • Event B • Antenna • IRIG • Modem Antenna • Bluetooth Antenna

Example: GSM Antenna + SIM door + 1-PPS A + 1-PPS B + Event A + Modem Antenna

The evaluation and development kit

for all TR and TRE Javad GNSS OEM boards
Include 4 items:

- 1 TR-G3T Cross Adapter
- 2 TRE-Interface Adapter
- 3 Power cable
- 4 TNC-MMCX RA 0,19 m RF cable

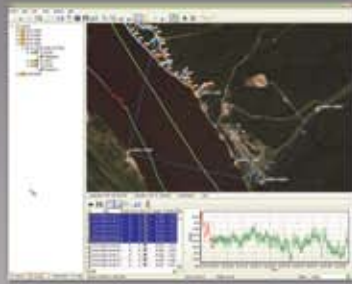


TR/TRE Evaluation Kit

Boxed Version



Software solutions for all tasks



Justin

A comprehensive Survey and GIS software



Tracy

A versatile and powerful field software



Giodis

Full-featured office post-processing software

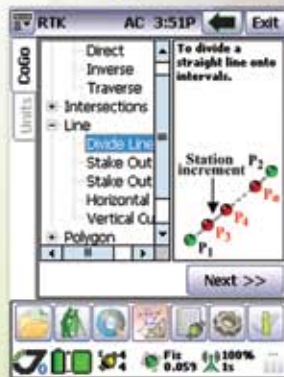
Victor

is pre-loaded with our Tracy field software. When turned on, Victor automatically connects to GISmore, TRIUMPH-1 or TRIUMPH-4X via its internal Bluetooth and guides you through field operations. It manages the GNSS receiver and modem operations automatically.

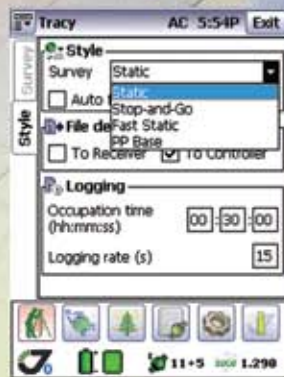
- **Lightweight** (17 ounces; 482 grams) magnesium case with easy-to-grip over-molding
- **Operating temperature** -22°F to 122°F (-30°C to 50°C)
- **Connectivity via built in Bluetooth, USB Host and Client, plus 9-pin RS-232 and optional WiFi and Modems**
- **Rechargeable, field replaceable, Li-Ion battery**
It operates for more than 20 hours on one charge (3 to 5 hours of charging time)

Tracy

software for Windows Mobile OS to control our receivers, automate GNSS post processing surveying tasks (Static, Fast Static, Stop&Go, Data Acquisition), and to perform RTK survey and stakeout tasks



Support for survey and stakeout projects



Static, Fast Static and Stop&Go surveying



Configuration of all hardware

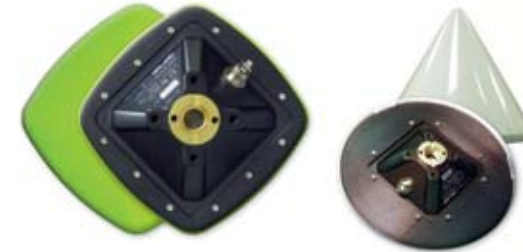


Antennas

GRANT-G3T/G3

GrAnt-G3T is a versatile high performance antenna with GPS L1/L2/L5; Glonass L1/L2; Galileo L1/E5

GrAnt-G3
Have similar case as GrAnt-G3T.
With GPS L1; Glonass L1; Galileo E1



SNOW CONE OPTIONS

- Protection Against ESD
- Have good vibration and shock resistance
- Possible options:
N-type connector
TNC on center
Snow Cone

TYRANT-G2T/G3

TyrAnt is our GrAnt antenna integrated with our TR-G3 or TR-G2T OEM board. It is the first and only smart antenna with triple frequency GPS with Galileo option



140x140x62 mm,
0.6 kg



GYRANT

GyrAnt is the GrAnt antenna integrated with Inertial Measurement Unit (IMU) consisting of three accelerometers and three gyros on three axes



140x140x62 mm,
0.6 kg

- Communication is provided via RS422 or CAN interface via M12 8 pin connector

AIRANT

AirAnt is designed to be mounted on aircrafts and applications where low profile and aerodynamic shape are desired. GPS L1/L2/L5; Glonass L1/L2; Galileo L1/E5



120x74x44.5 mm,
0.32 kg

- Overload protection
- Improved rejection out-of-band signal rejection

TRIANT

TriAnt is small, thin, and rugged high performance GNSS antenna. It is ideal for applications like navigation and surround antennas of TRIUMPH-4X. With GPS L1/L2/L5; Glonass L1/L2; Galileo L1/E5

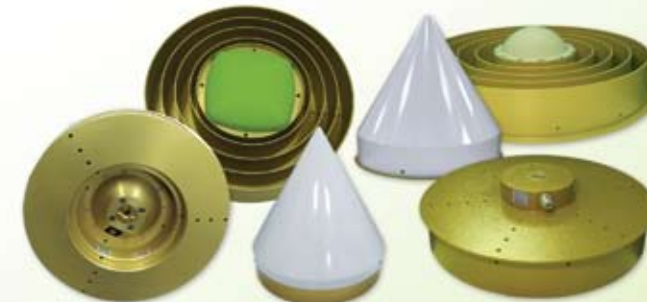


128x128x55 mm,
0.47 kg

- 2 different mounting options:
female thread 1"-14
3 holes M5 ϕ 50

RINGANT-G3T

is our GrAnt antenna mounted on our own choke ring ground plate. With GPS L1/L2/L5; Glonass L1/L2; Galileo L1/E5



RINGANT-DM

traditional choke ring with Galileo option and Dorne-Margolin element. With GPS L1/L2/L5; Glonass L1/L2; Galileo L1/E5/E6