

# TRIUMPH-1

TRACY versatile and  
JUSTIN comprehensive  
GIODIS survey systems



*Tracy  
in focus*



Better than 30 cm GIS... instantly  
or 5 cm static



Actual size

**GISmore** stand-alone or  
inside the hat

Bluetooth wireless  
connection to GISmore

- GPS L1
- Galileo E1
- GLONASS L1
- 100 Hz update rate
- 100 Hz update rate
- RAIM
- WAAS/EGNOS
- Rechargeable Li-Ion Battery
- GNSS Antenna
- GSM Module
- Bluetooth® Interface
- Bluetooth/GSM Antenna



Many  
ways  
to use

# Tracy – as easy as 1-2-3

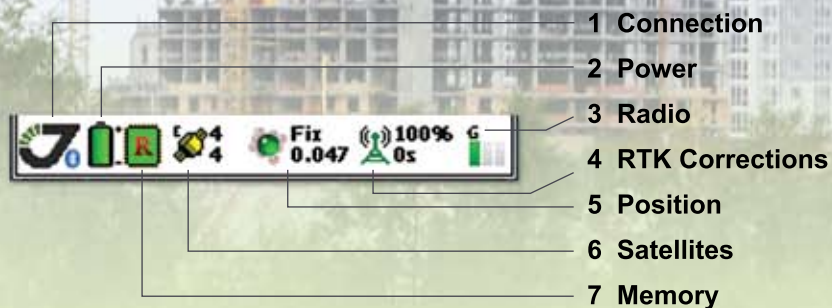
# A comprehensive field software

1 CONNECT - 2 CONFIGURE - 3 SURVEY



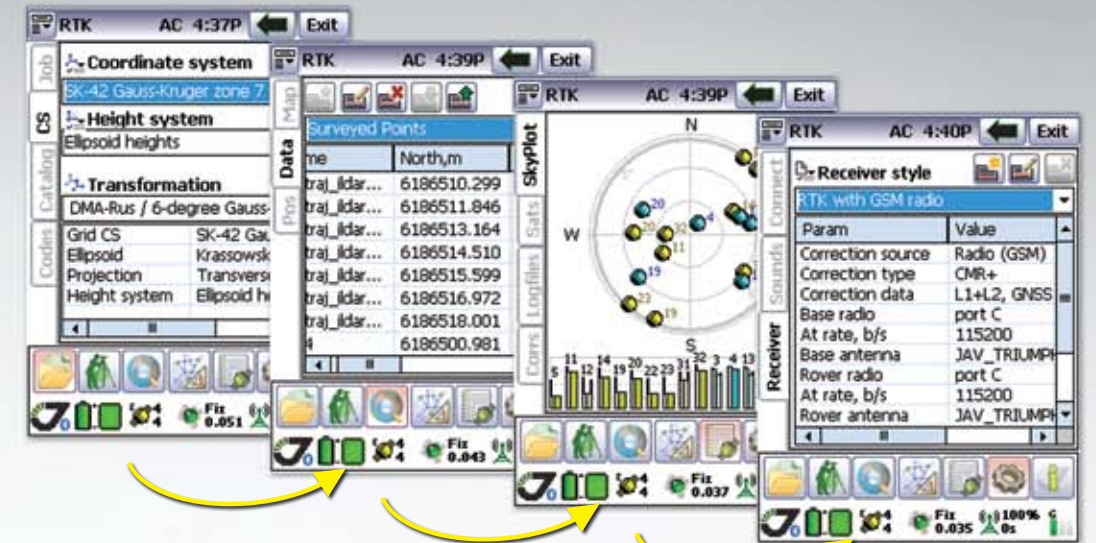
- All complex GNSS survey with Tracy by just 3 buttons on one screen
- Constantly monitor all hardware status – green color means ok, red indicates on a problem

CONSTANT MONITORING ALL SURVEY INFORMATION



TWO MODES:

- LITE  
for novice user and main survey works
- EXTENDED  
for complex tasks and configurations

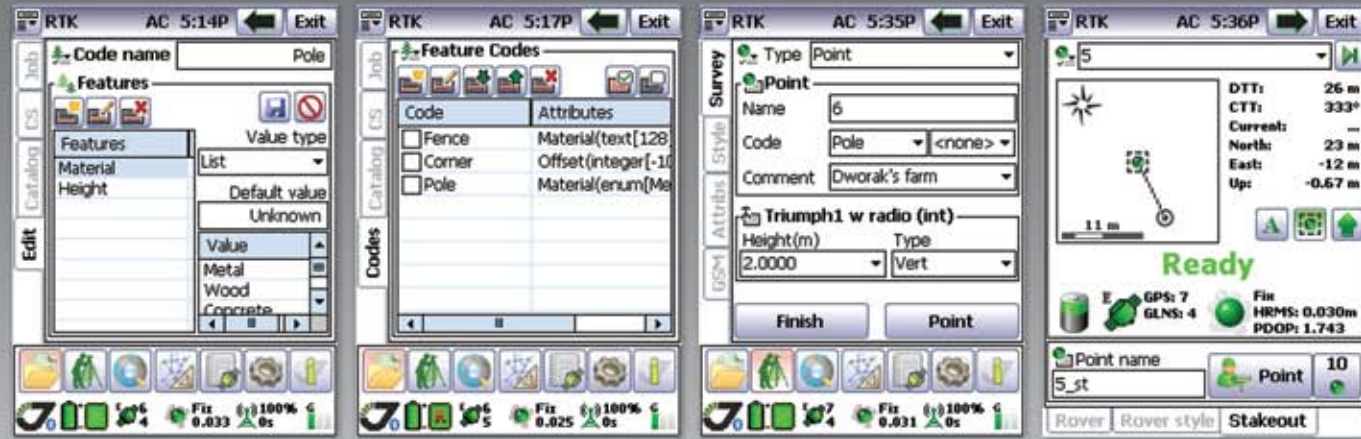


Instantly switch from one window to any other by just one or two click due to tabs and pages window organization



# Suitable for all kinds of work

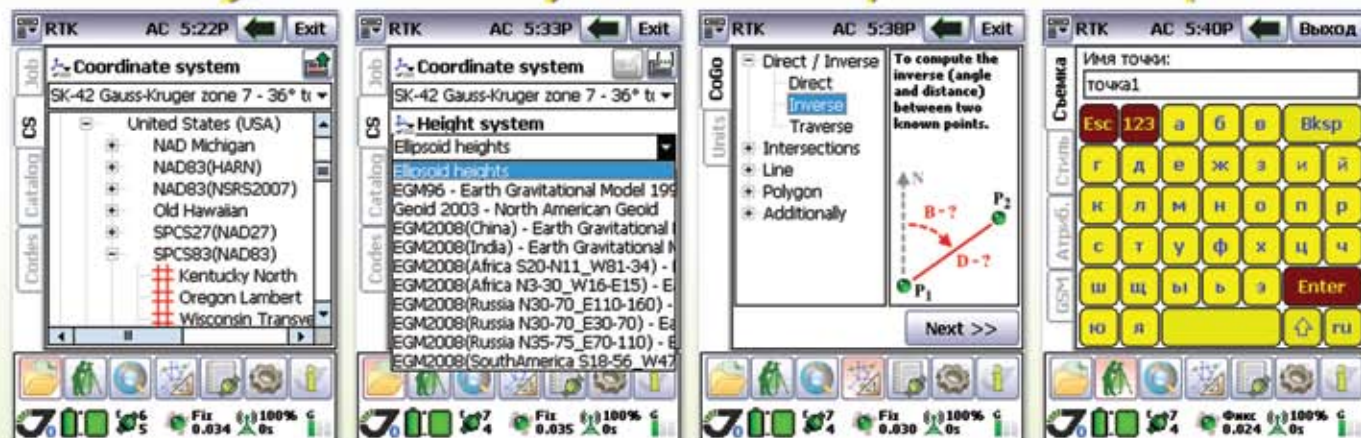
# Special modules for special tasks



Feature codes and data acquisition with attributes

All main surveying task – point survey, trajectory survey, stakeout, data acquisition etc

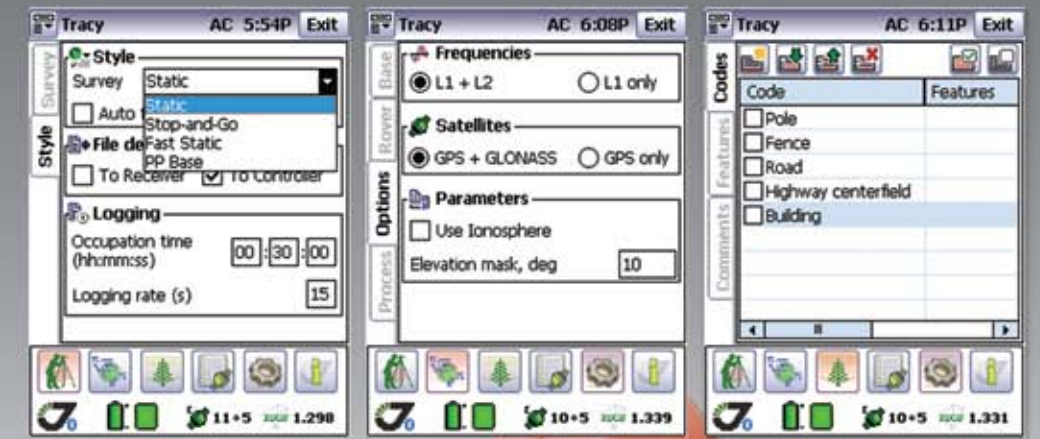
- Data acquisition with feature codes
- National and local coordinate system and geoid support  
Horizontal and vertical localizations
- Increased productivity and reliability
- Built in COGO routines



Wide set of coordinate system including local and user defined. Ability to use global, regional and user defined (with Tracy Tools) geoids

Set of CoGo (Coordinate Geometry) tasks

Full internationalization, including on-screen keyboard



Static, Fast Static and Stop&Go surveying

In-field data analysis

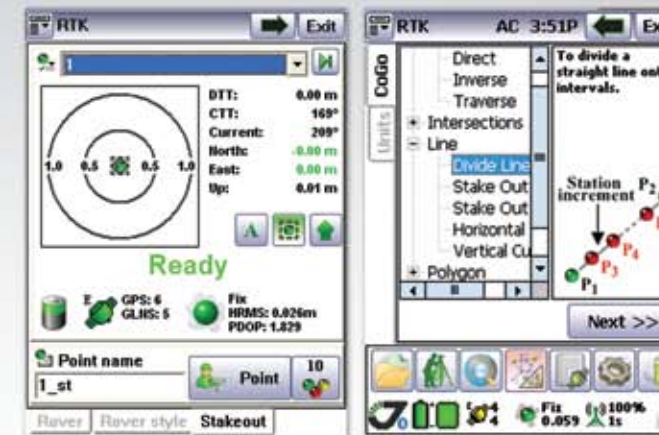
Data acquisition in post-processing survey with attributes

## PPK MODULE

DATA COLLECTION FOR POST-PROCESSING

## TRACY

RTK (Real Time Kinematics) SURVEY AND STAKEOUT

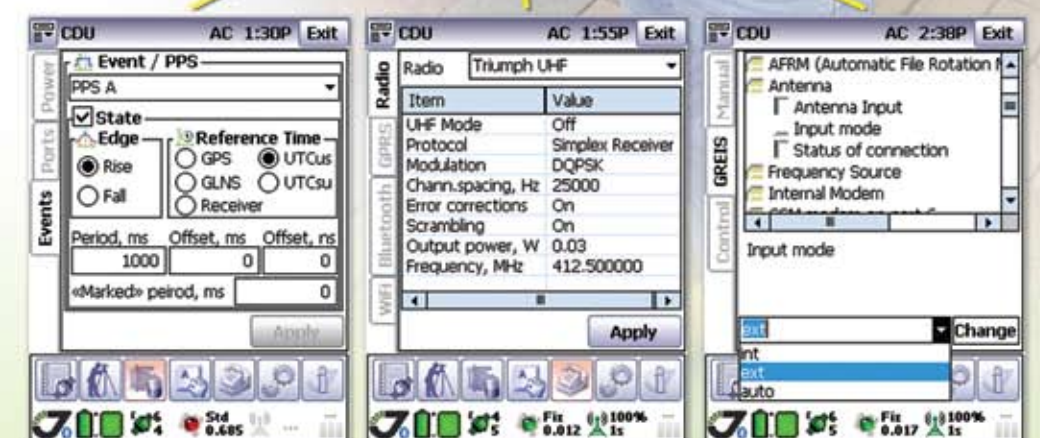


Support for survey and stakeout projects

## CDU MODULE

CONTROL DEVICE UNIT

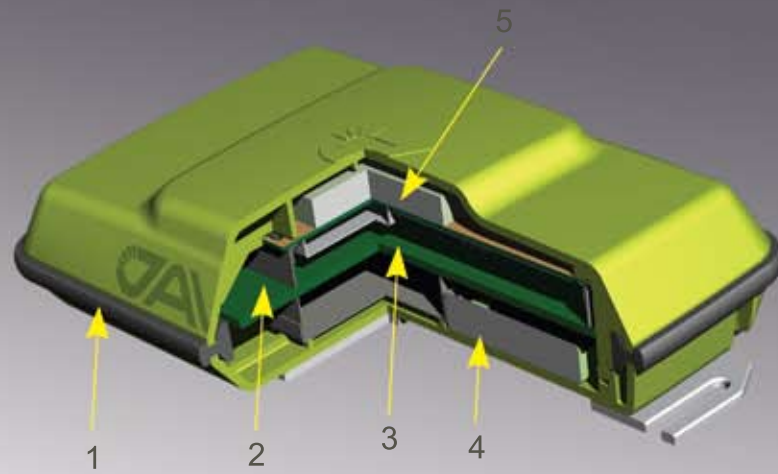
Advanced configuration and trouble-shooting directly in field



Configuration of all hardware, including internal UHF/GSM/GPRS radios, Bluetooth module, WiFi module, etc

Full control of receiver with GREIS commands in terminal or by settings





1. Guard Bumper
2. Bluetooth/GSM Antenna
3. GNSS Receiver, Power Board, GSM/Bluetooth and Memory
4. Rechargeable li-Ion Battery
5. GNSS Antenna Connectors

GISMORE receiver is based on our TRIUMPH Technology implemented in our TRIUMPH Chip. For the first time in the GNSS history we offer very powerful GIS field mapping receiver with up to 100 Hz RTK, 216 channels of single frequency GPS, Galileo and GLONASS in a small attractive, sturdy, and watertight box.

Using its internal Bluetooth® and GSM/GPRS connection the receiver can access local GNSS Reference Station Network. As standard future the GISMORE receiver provides access to the SBAS correction services. In addition to post-processed DGPS capabilities, the GISMORE utilizes external correction services for real-time DGPS mapping and navigation applications.

## Victor

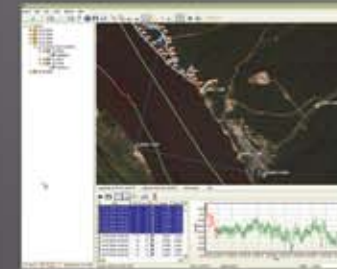


Victor is pre-loaded with our Tracy field software. When turned on, Victor automatically connects to GISMORE, TRIUMPH-1 or TRIUMPH-4X via its internal Bluetooth and guides you through field operations. It manages the GNSS receiver and modem operations automatically.

- **Lightweight (17 ounces; 482 grams)**  
magnesium case with easy-to-grip over-molding
- **Operating temperature**  
-22°F to 122°F (-30°C to 50°C)
- **Connectivity via built in Bluetooth, USB Host and Client, plus 9-pin RS-232 and optional WiFi and Modems**
- **Rechargeable, field replaceable, Li-Ion battery**  
It operates for more than 20 hours on one charge (3 to 5 hours of charging time)

### Justin

*A comprehensive Survey and GIS software*



### Tracy

*A versatile and powerful field software*



### Giodis

*Full-featured office post-processing software*

