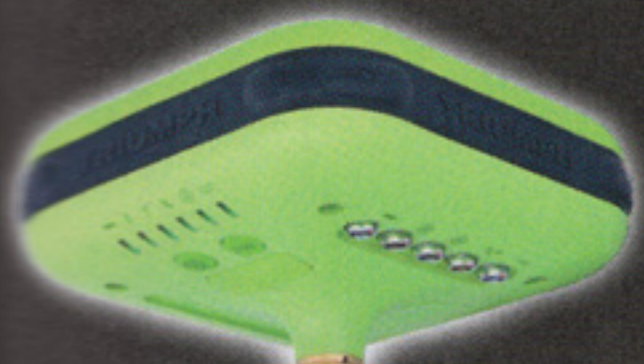


TRIUMPH-1



### TRIUMPH-VS, Fully integrated

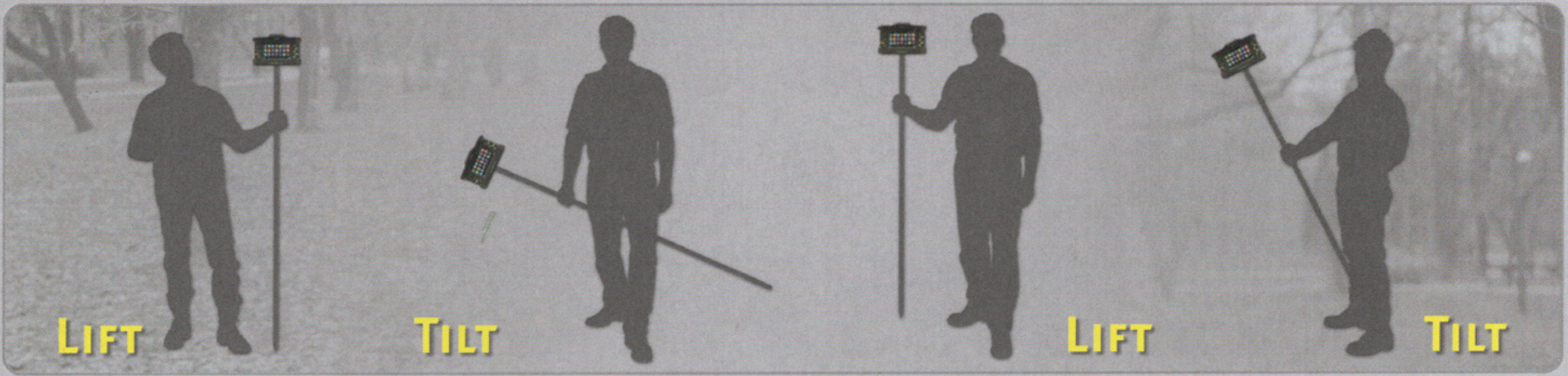
- GNSS receive,
- High precision Antenna,
- Controller & Software

### Victor-VS

Controller &  
Software



# Don't Look! Don't Touch! ... Survey with Lift&Tilt

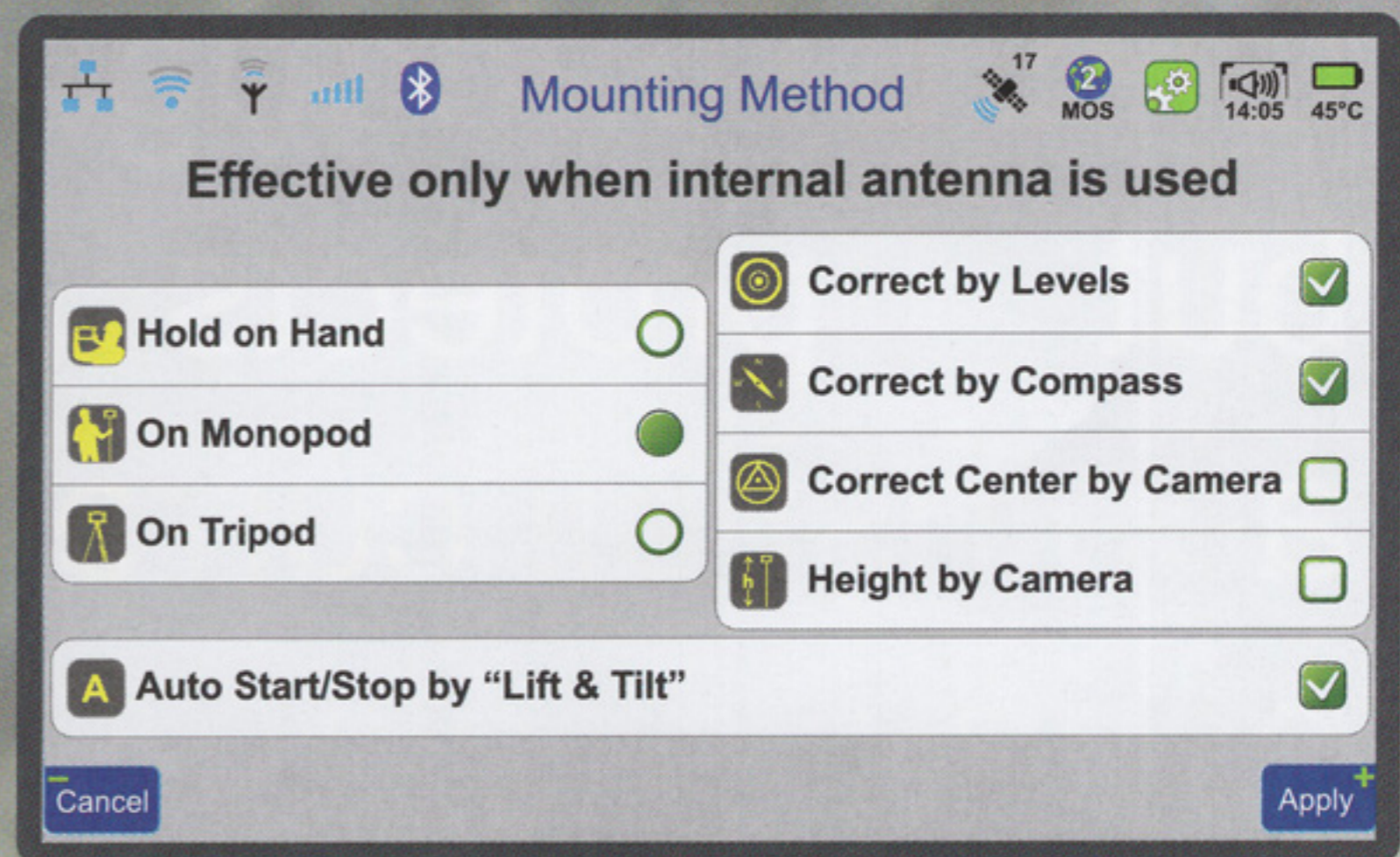


Many sensors, intelligence, and innovations inside TRIUMPH-VS bring this new **revolution to surveyors.**



You don't need to look.

You don't need to touch.



## J-shield

Our team has been bringing you the latest GNSS technology for the past **30 years**.



Our J-Shield protects **not only** the **GPS L1** band against Light Squared, but protects **all GNSS bands** against **all current and future** near-band signals.

# Visual Stakeout

**View** your target point on the TRIUMPH-VS screen and **walk towards it** to stake it.



RTK Fixed



RTK Float



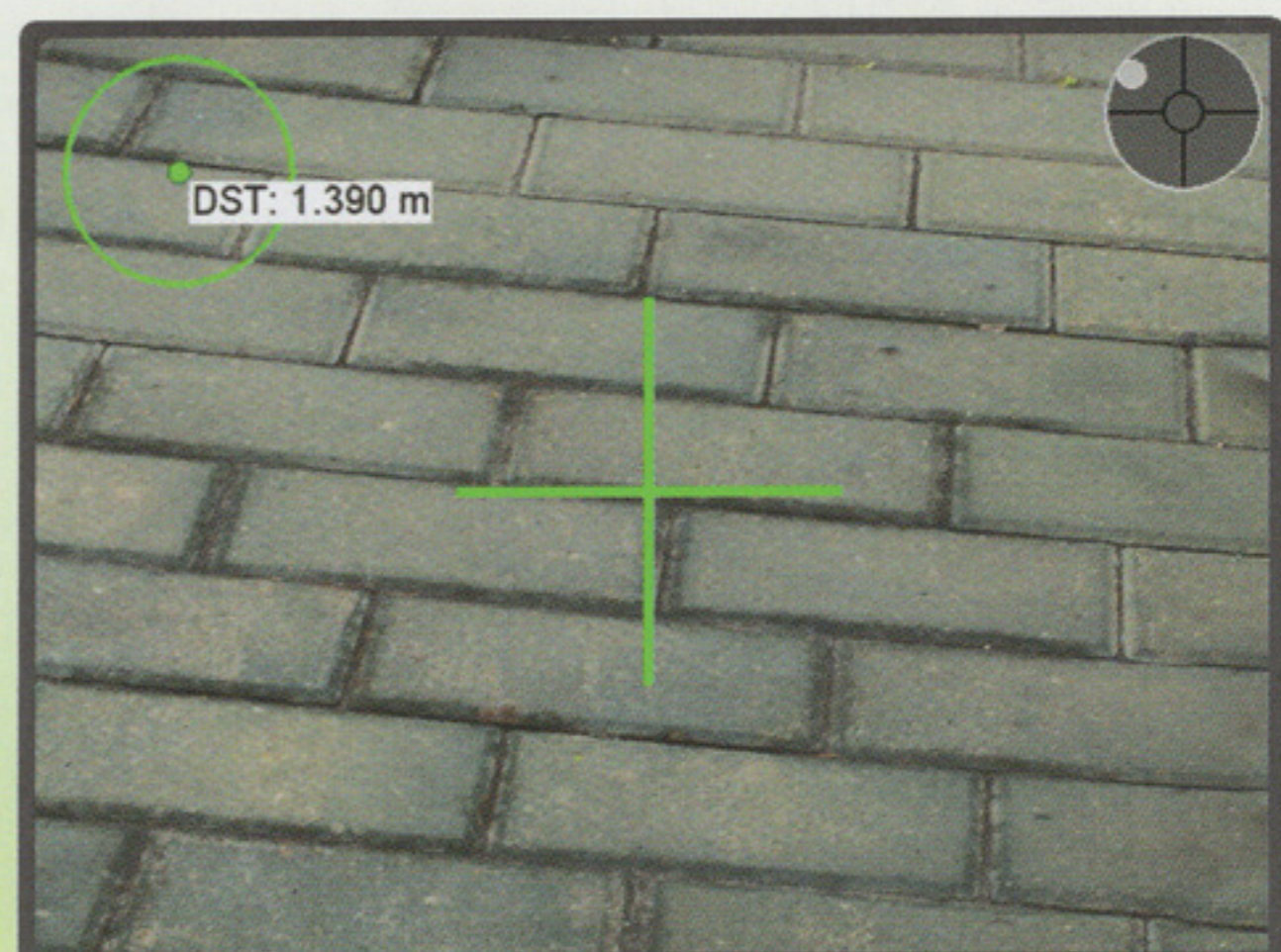
Stand-alone

Target point marking flag



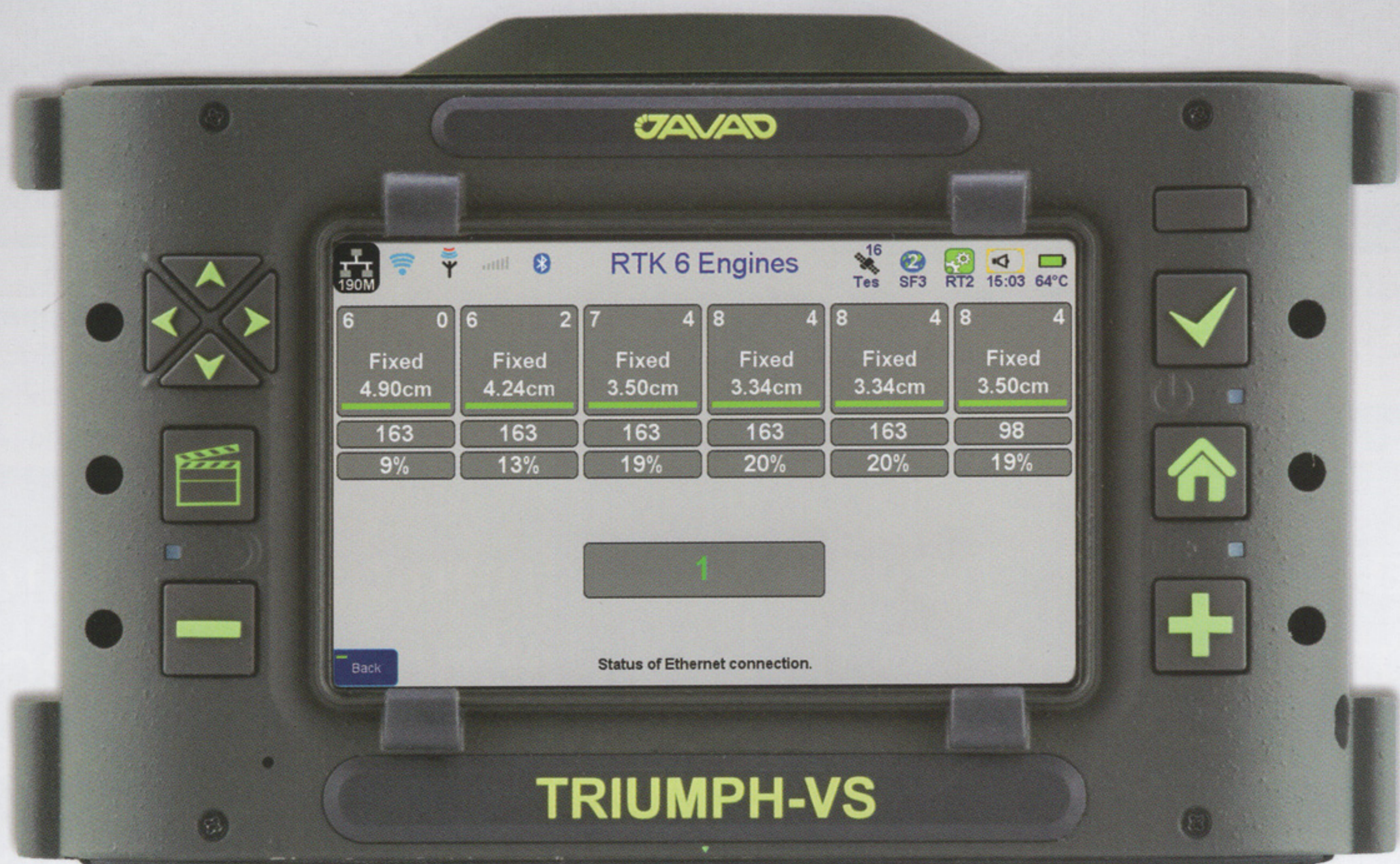
Target point itself

Planar distance



# Six Parallel RTK Engines

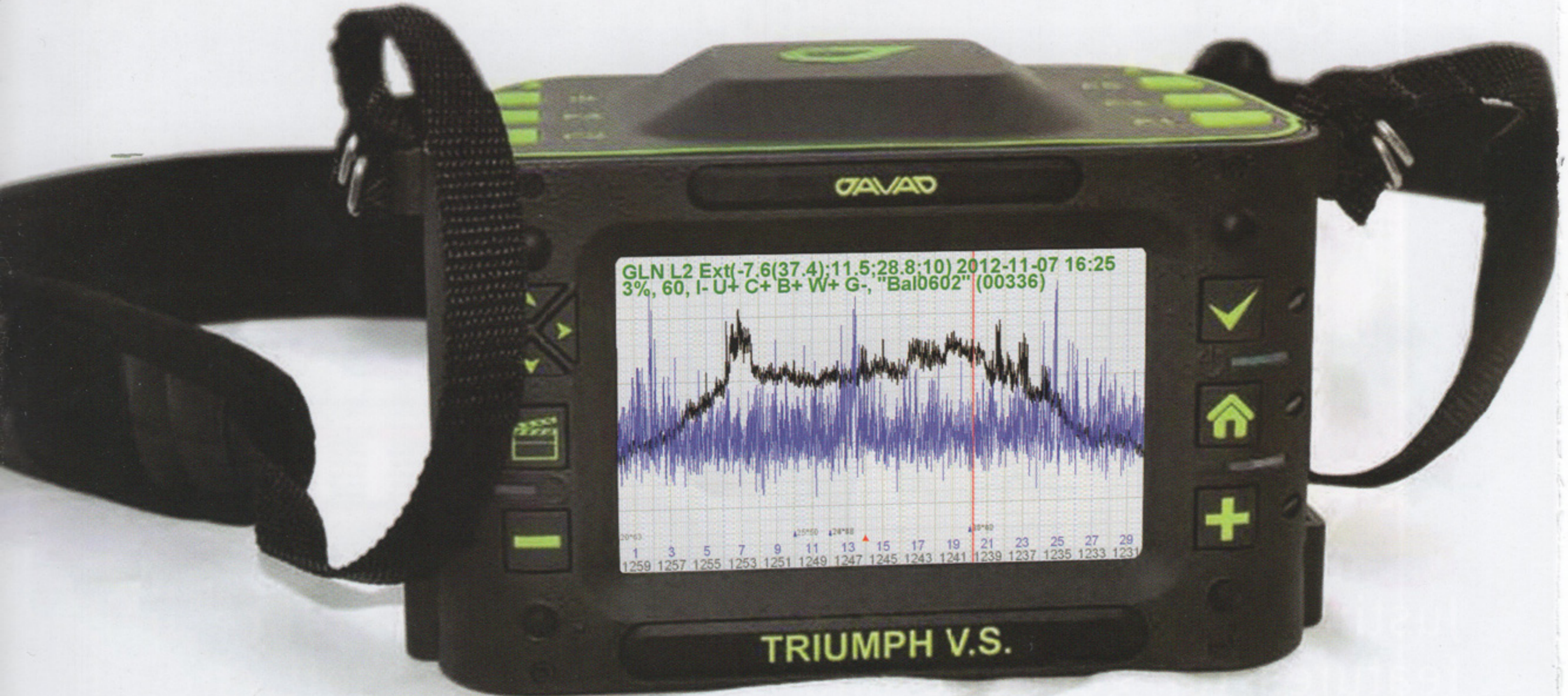
Each of our **6 parallel RTK engines** employs different algorithms to calculate solutions and the weighted average of them provides the **most robust, accurate, and fastest** results.



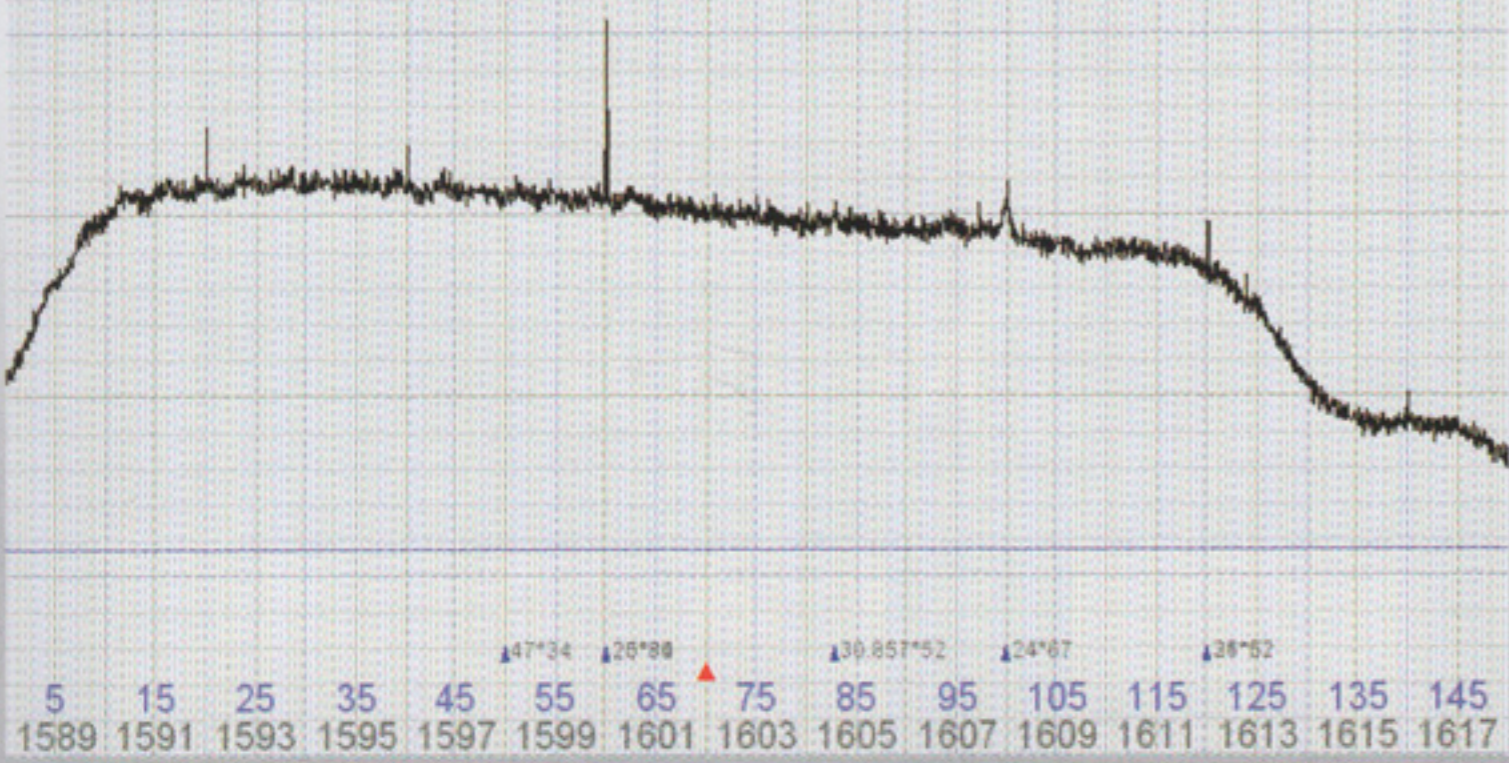
This engine is **behind the hood**. This is why it is **so easy** to get the **fastest** and most reliable RTK solutions.

# See **who jams** your GNSS

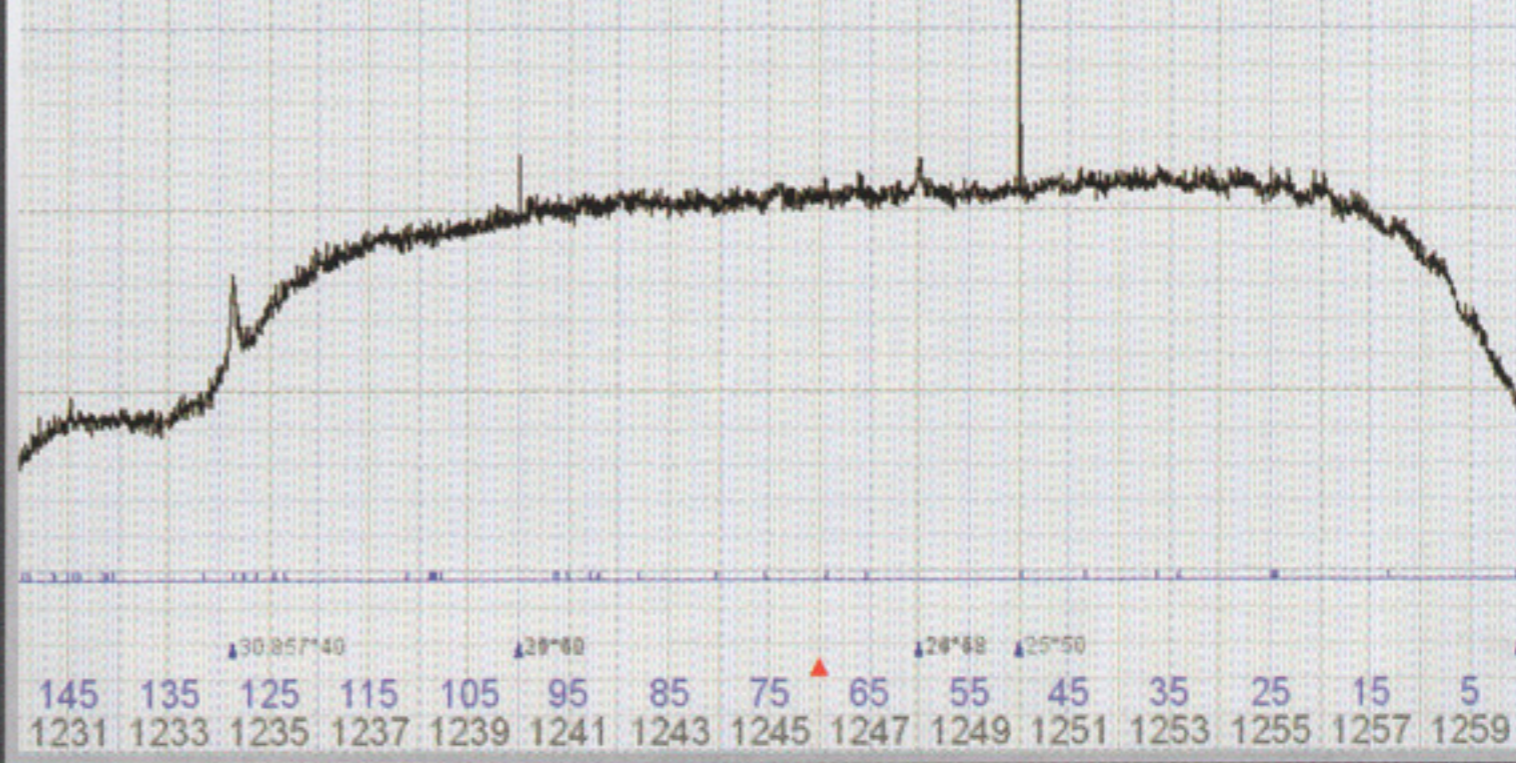
Now you can **“view” interferences** in your environment before **starting your job** and see if RTK is degraded.



GLN L1 Int(-2.2(38.7);0.5;28.5;50) 2012-11-09 09:51  
"Bal0801-O" (00336), 3%, 60, I-U+ C+ B+ W+ G-

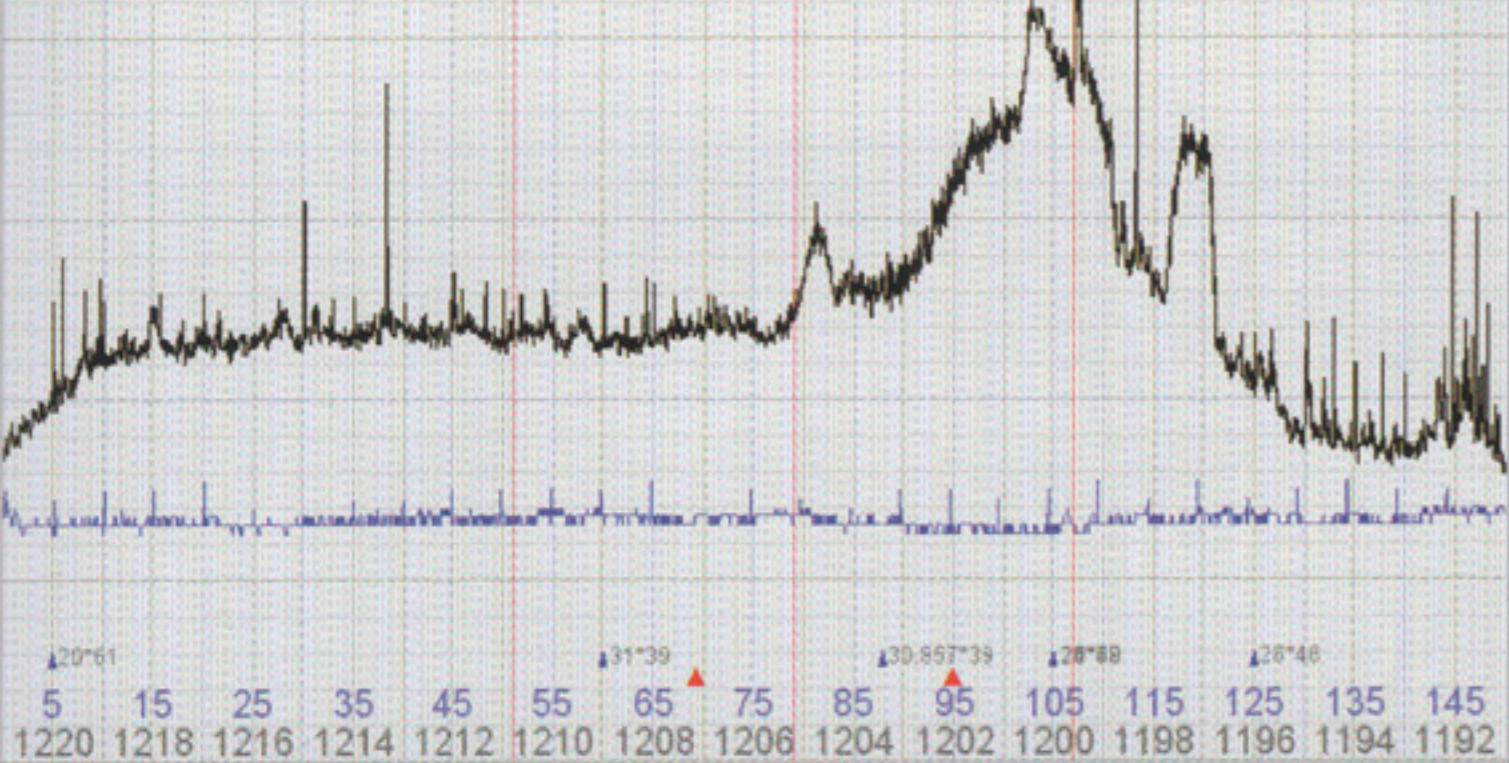


GLN L2 Int(-1.5(40.5);0.2;28.5;50) 2012-11-09 09:51  
"Bal0801-O" (00336), 3%, 60, I-U+ C+ B+ W+ G-

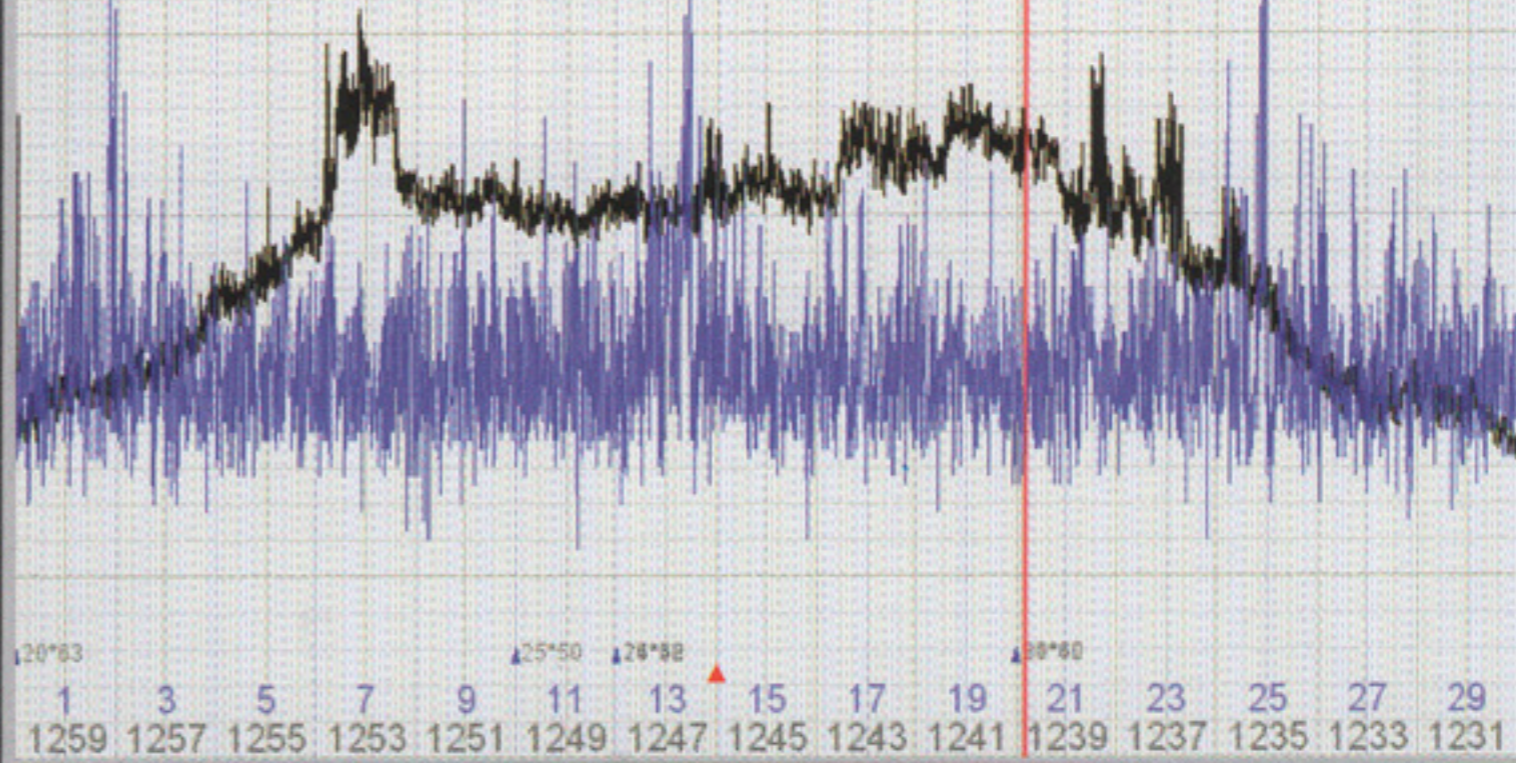


## Actual examples of **clean GNSS** environment

GLN L3 Ext(-4.5(37.5);0.8;28.4;50) 2012-11-07 16:30  
3%, 60, I-U+ C+ B+ W+ G-, "Bal0701" (00336)



GLN L2 Ext(-7.6(37.4);11.5;28.8;10) 2012-11-07 16:25  
3%, 60, I-U+ C+ B+ W+ G-, "Bal0602" (00336)

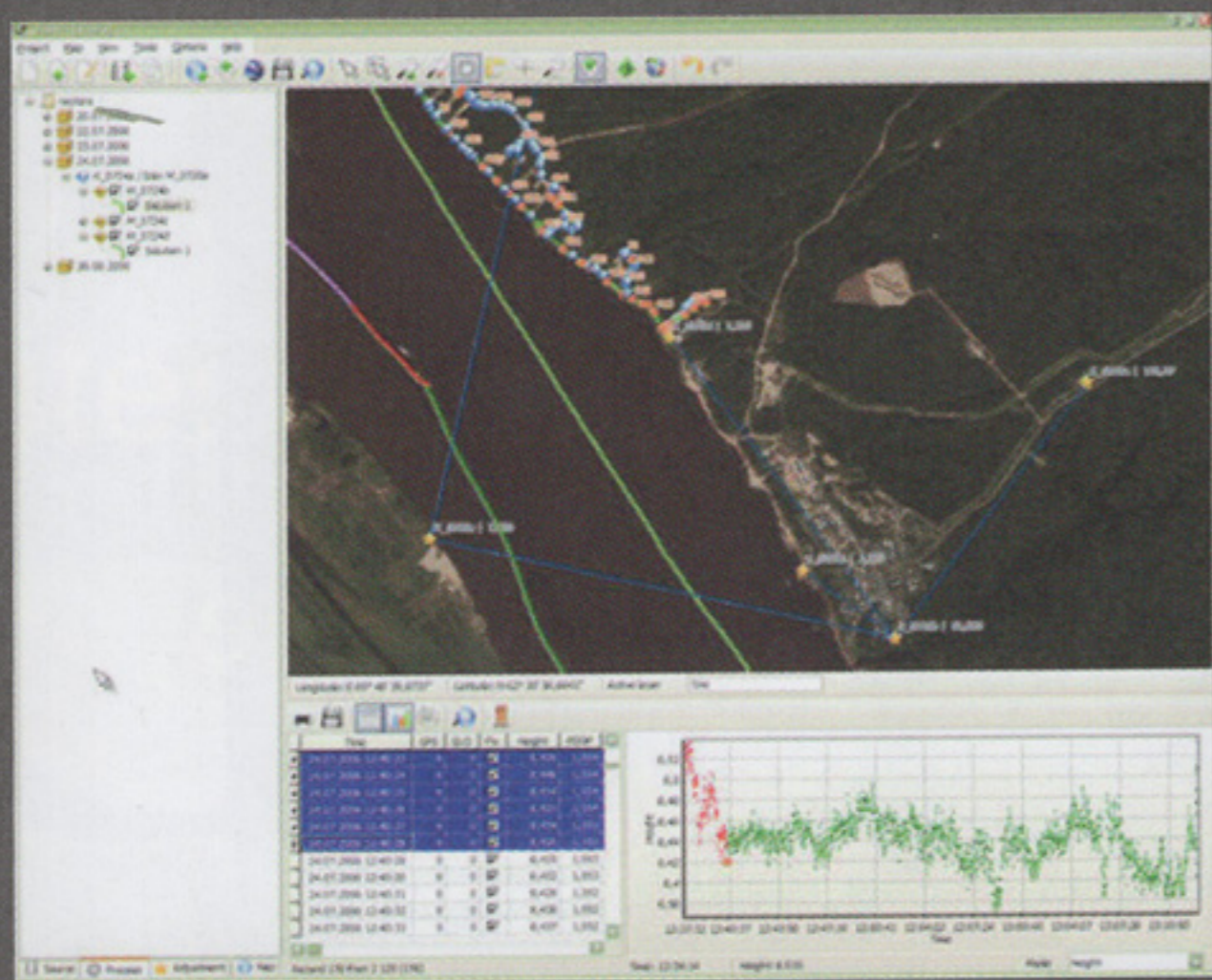


Actual examples of **noisy GNSS** environments. People could not use these satellites and **did not know why**.

# Software

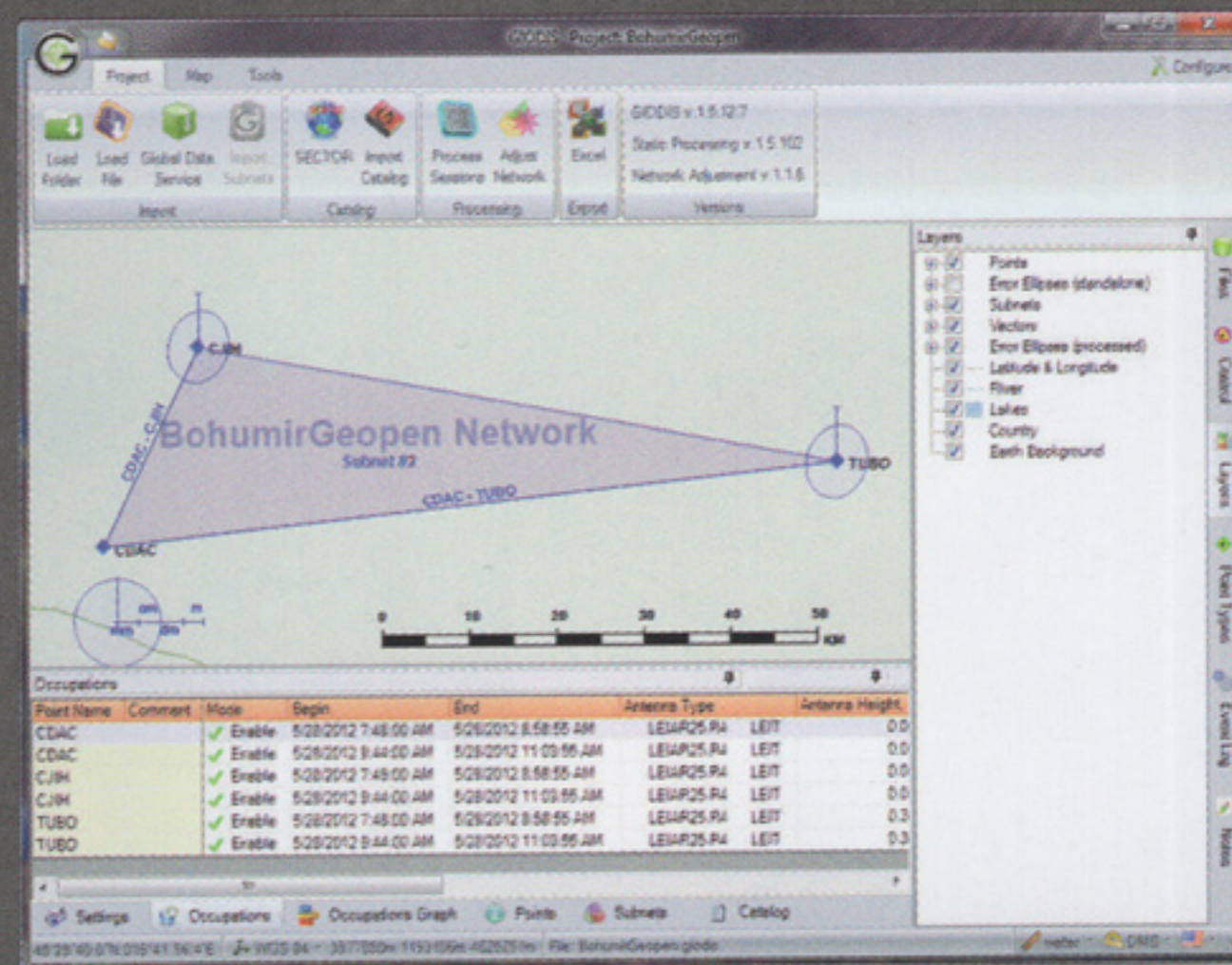
Complete software suite for survey, GIS and control.

## Justin



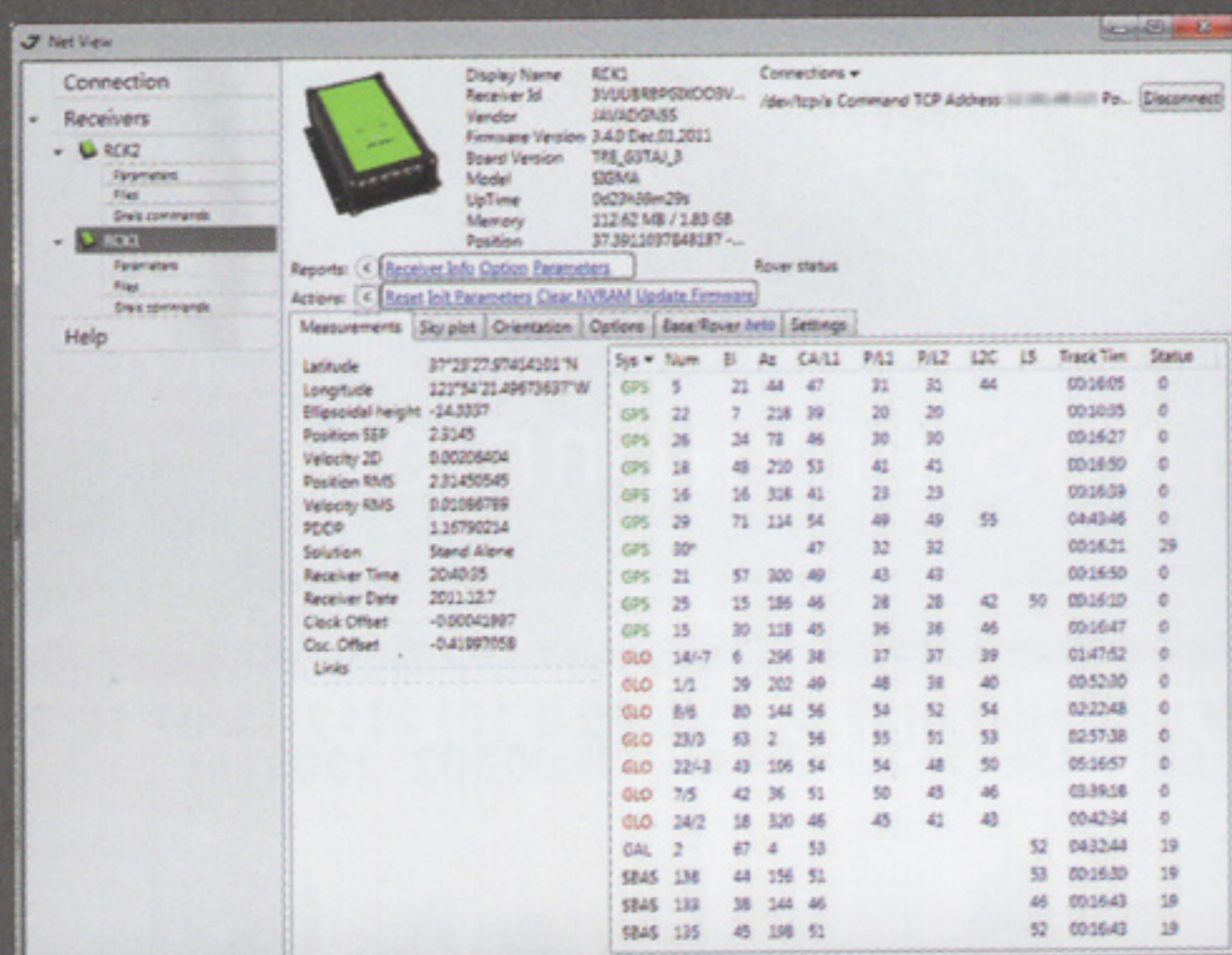
Justin has full range of features for geodetic and surveying tasks.

## Giodis



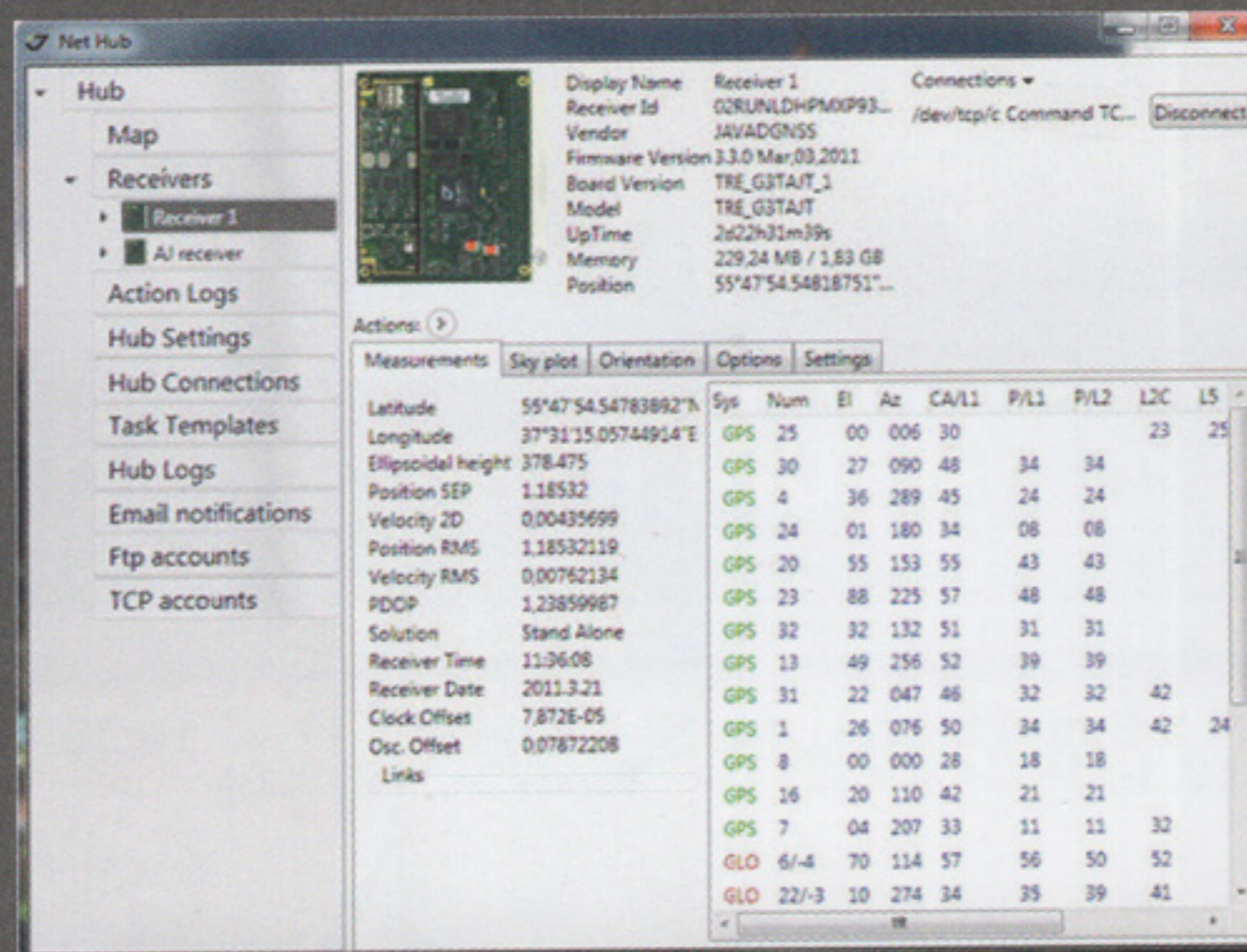
Full-featured office post-processing software for high-precision geodetic and surveying applications

## NetView



Application to easily control JAVAD GNSS receivers.

## NetHub



Windows® application for controlling GNSS receivers developed by JAVAD GNSS, INC.

The reason for our **8-page** advertisements is that we want to **substantiate** our claims of excellence by explaining technical details. We provide the **most accurate**, the **most features**, and the **easiest-to-use** GNSS instruments, period.



We do not have any financial ties to **LightSquared**. Our one technical project with LightSquared ended **last year**. We provide **protection for GNSS bands** and spectrum monitoring and reporting because we believe these are the **right things to do**. We do all these and all advertisements with **our own nickel and dime**. We have no relationship, no arrangements, and no dialogue with LightSquared.