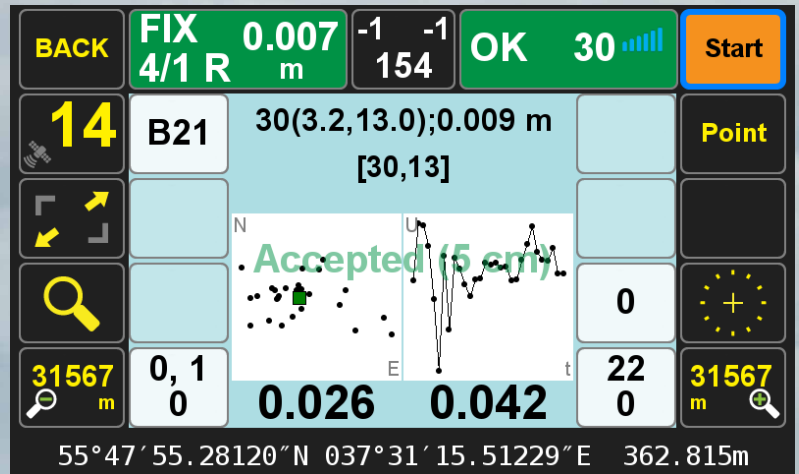


# J-FIELD

IN FIVE PLATFORMS

## RTK & Auto-Verify

J-Field is the most advanced controller software for Geodetic and GIS applications. With our Auto-Verify feature, we claim that it never ever gives a wrong fix. We have offered to reward \$10,000 to any U.S. Professional Land Surveyor who can prove otherwise.



### RTK with J-Field in five platforms:



TRIUMPH-LS



TRIUMPH-NT + GrAnt



TRIUMPH-1M + Victor-LS



TRIUMPH-2 + Victor-LS



OMEGA + Victor-LS + GrAnt

Not only the best RTK Systems, they all can also be used as base stations and any other applications.

# TRIUMPH-1M

GPS + GLONASS + Galileo + BeiDou + QZSS

TRIUMPH-1M has same features as TRIUMPH-LS but without integrated controller.

TRIUMPH-1M and Victor-LS make a complete RTK system.



TRIUMPH-1M + Victor-LS

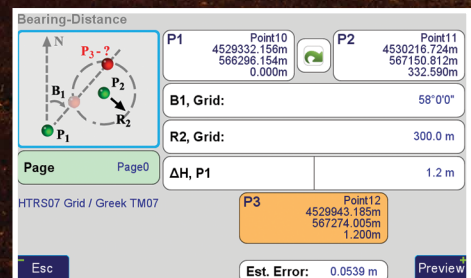
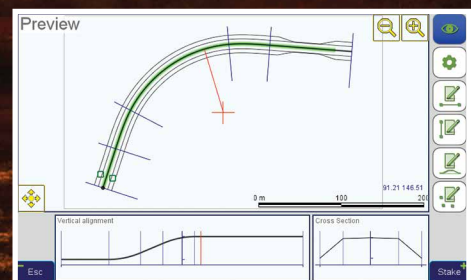
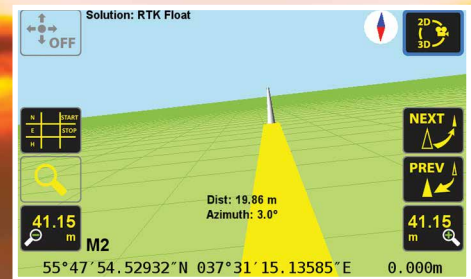


# TRIUMPH-LS

Receiver+Antenna+Radio Modem+Controller+Pole



- 864 Channels for all GNSS signals
- 24 Hours Battery Life
- Interference monitoring of all GNSS and UHF channels
- Visual Stake out
- Lift & Tilt
- 6 parallel RTK engines



# TRIUMPH-NT

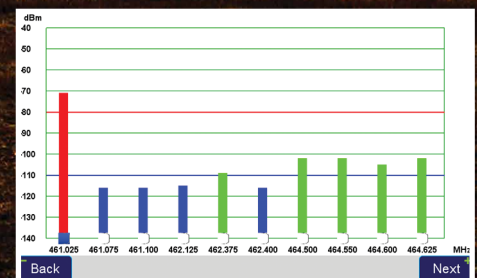
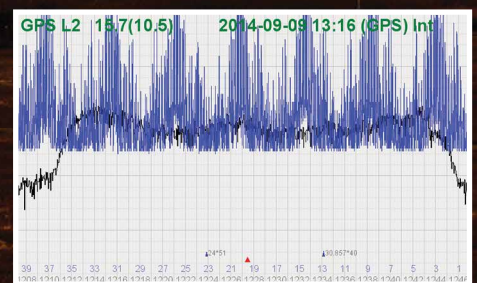
Receiver+Radio Modem+Controller+Pole

Similar to TRIUMPH-LS  
but without integrated  
GNSS antenna.

TRIUMPH-NT and GrAnt  
antenna makes a complete  
RTK system.



**TRIUMPH-NT + GrAnt**



# Victor-LS

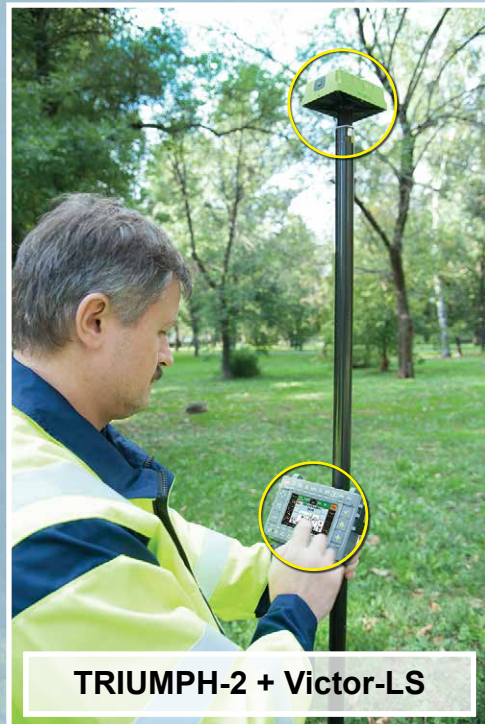
The Rugged Field Controller



Victor-LS is a rugged field controller. It runs J-Field and can be used with TRIUMPH-1 and TRIUMPH-2.



**TRIUMPH-1M + Victor-LS**



**TRIUMPH-2 + Victor-LS**

# OMEGA

## Rugged GNSS Unit



OMEGA + Victor-LS + GrAnt

OMEGA is the most advanced GNSS receiver. It does not include integrated antenna and controller. It is suited for applications like **machine control** and in **marine** and **avionics** applications.

Adding GrAnt and Victor-LS makes a complete RTK system.

It is well suited for **monitoring** and **network stations**.

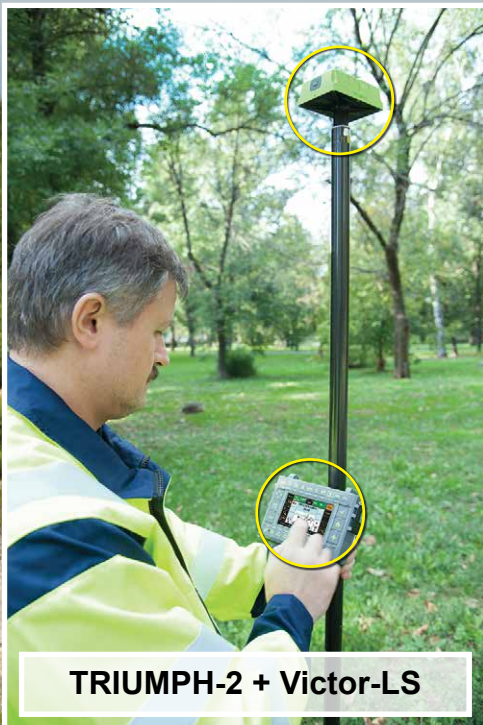


# TRIUMPH-2

Static → GLONASS → RTK Base → RTK Rover



TRIUMPH-2 tracks GPS L1/L2, GLONASS L1/L2 and Galileo L1.



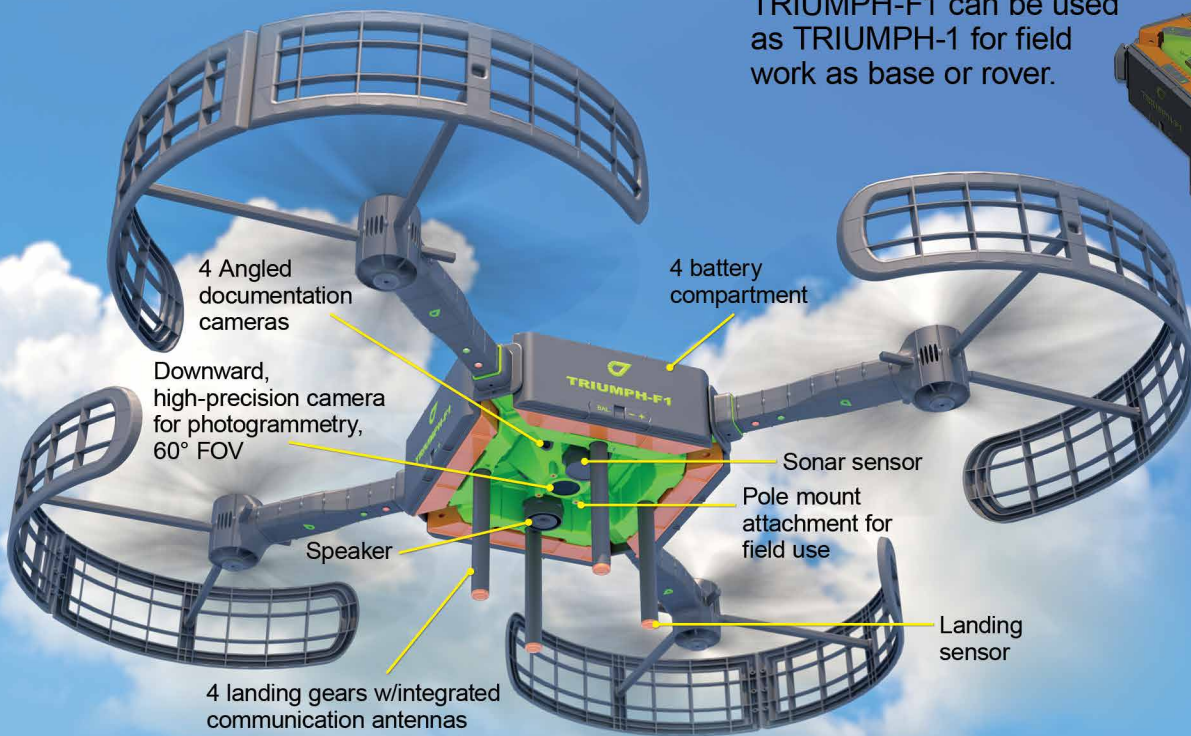
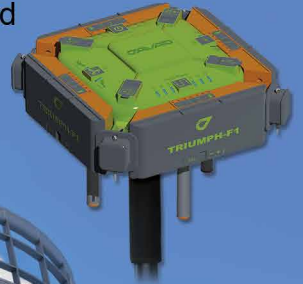
TRIUMPH-2 + Victor-LS



# TRIUMPH-F1

864 Channels, All GNSS Signals, Bluetooth, WiFi, UHF, GSM, Spread Spectrum

TRIUMPH-F1 can be used as TRIUMPH-1 for field work as base or rover.



Ready to fly in Q1 2015.

