

TRIUMPH-LS and J-Field

with radio
\$12,990



Hands free operation

RAMS

Remote Assistance & Monitoring Services (RAMS) allows you to connect to your Triumph-LS from anywhere in the world when both your computer and Triumph-LS have access to the Internet. Every function of J-Field that is available to the operator of the Triumph-LS that's in the field, is available to the remote viewer!



There's nothing else on the surveying market like RAMS, that I'm aware of. What an extremely handy tool that works really well and is perfectly integrated into the field software!

*This morning, while on a project 40 miles away, I was re-walking him through setup/ground projections and I was logged on to RAMS watching/helping his setup process. **It's an amazing thing to be able to step in and help out a crew from the office!** It's been incredibly helpful the countless times I've called @Adam for help.*

I have to say, this is excellent work by the Javad team!!

Over the past year I've kept the LS system mostly to myself, learning as much as I could about it and getting comfortable with it before I started training any of my crew leaders to use it. Recently I've started training one of my guys to use it, the most experienced of my field team and an extremely bright guy.

Here's a cool screen grab of him staking to his base point to make sure everything was jiving.

Wes Cole
Asheville, NC

J-Field • J-Tip • J-Pod • J-Pack • J-Shield

“Why Javad? Because it works where nothing else will and it has abilities and features that nothing else does.”



“Truely amazing with a 4” grape vine directly overhead and the tree cover.”



“I got some ridiculous ‘fixes’ today in some horrible situations. Reset receiver, moved around, etc. Tried to get a bad fix but had a hard time doing it.”



“This thing is bad ass!”



“Using licensed professionals for development has been a brilliant idea. Tip of the hat to the programmers and designers that put the original box together it appears to me that they knew where they were going with this years ago.”

“I had 100% confidence this RTK was good. As soon as I stored the shot I inverted to my design point at that location and got 0.06’. No second PPK necessary! Then for the cherry on top, I processed the PPK at the office at it was 0.05’ from the RTK I stored. **Just an amazing Surveying machine!**”



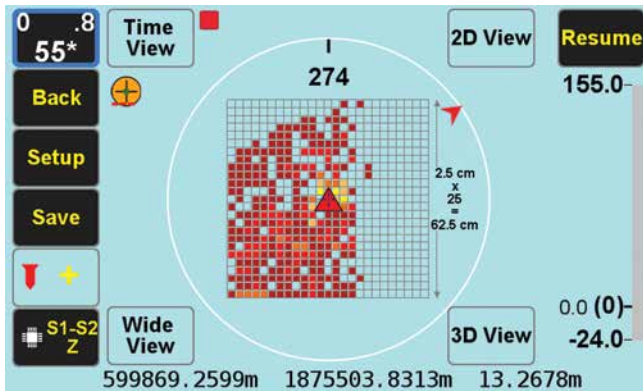
“The LS has increased our productivity 2:1”



J-Tip Integrated Magnetic Locator

\$850

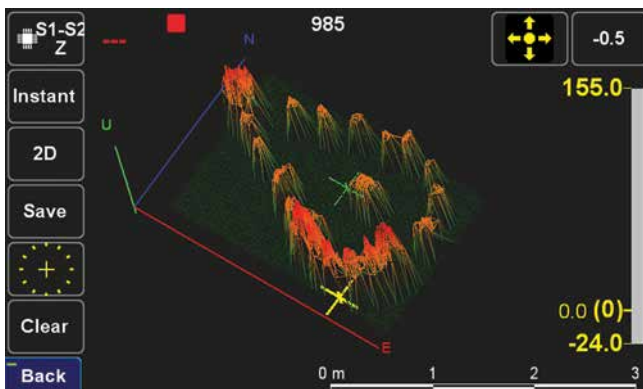
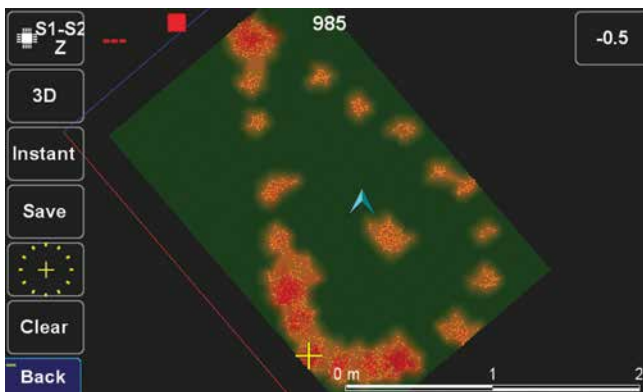
TRIUMPH-LS tags coordinates with magnetic values, It also guides you to top of the item to survey it.



The Mag View focuses only on the mag object with the highest mag value.

The audio and graphical bar on the right side show the magnitude of the magnetic object.

In "Setup" you can select the cell size and the size of the field you want to scan.



The J-Tip has far exceeded my expectations. It is a tool that I have thought about daily my whole career. My thoughts used to be why can't they (whoever they are) make a metal locator that will fit in my pocket. Well, you did it! Yesterday, I was working on a 14 acre boundary survey in steep mountain country. I was able to recover every corner I searched for using the audible tones. I was more effective and efficient than in the past and realized that you have cut the weight and bulk of a metal locator to a fraction of what it was. The J-Tip is lighter than my phone and it fits in my pocket! **The locators that I previously used are now collecting dust.** They were heavy and cumbersome to tote around. One particular locator that I have used thru the years had a holster and would hang on your side. The back of my knees have taken a beating from that thing slapping the back of them with every step. The J-Tip proved itself to be tough and durable on the mountain survey project. I was also providing topography on a few acres of the site that was covered with green briars, saw briars, kudzu, and very thick. I left the J-Tip on the monopod while working in the brush. Minor scratches are to be expected in that type of environment, so it has a few but the J-Tip took a beating yesterday and worked like a mule. Very impressive!

Adam Plumley, PLS

2D and 3D views of the field show the magnetic objects that have been scanned.

Zooming the 2D and 3D screens can show the shape of the magnetic objects under the ground.

For many sophisticated features of the J-Tip see its Users Manual in www.javad.com

J-Pod

\$850

A rugged Transformer-Pod

J-Pack

\$290

Convenient survey bag



Javad.....Bravo!!!!

The J-Pack is nicest bag I have ever seen for surveying. I especially like the pocket in the back and all of the places to tie down equipment and stuff.

Adam Plumley, PLS



Landing Pads



J-Pod Inside bag.



Monopod >>> to + Bipod >>> to + Tripod...
On demand.



J-Field

Application program of TRIUMPH-LS

The best surveying machine that's ever been made!



Hasn't been much to chat about lately and it's been a while since I posted so....

*While nothing earth shattering has been added to the LS since probably the PPK ability back around six to eight months ago, there have been many minor subtle changes that continue to improve **the best surveying machine that's ever been made!** Upsampling, the ability and programming to work with the J-Tip and several changes and improvements in DPOS (most notably the ability to DPOS from a second rover) have all been used and noticed by us. Several others, I'm sure, I've not even noticed or found yet.*

*That being said, what continues to amaze me is the small amount of problems, we the users have with these changes. Sure, there's an occasional little "bug" here and there, but **the overall performance, durability and dependability of this amazing little box is unreal!!***

When there is an issue, as Nate had yesterday with the dist to last white box, it is addressed and taken care of almost immediately.

*With almost 30 years of working with all different types and brands of equipment **I've never seen or used anything close to what the Javad products deliver!** All the designers, engineers and 5PLS crew should be proud of what you're doing and it's a pleasure to be a small part of it myself.*

Darren Clemons
Central Kentucky

Just a note complimenting on the service you provided setting up a transverse Mercator county coordinate datum for my Javad LS. I can now duplicate county coordinates on any published DOT or NGS station in that tilted plane zone in our county in Minnesota within millimeters.

Recently, I purchased a used [REDACTED] Geo XH 6000 series submeter unit but found the TM county zone was not loaded. In conversations with a [REDACTED] dealer, I was told they do not support the datum. They did try to create the coordinate system using the NGS parameters but when I proofed it, the coordinates may have just as well been on the moon. Leica has the coordinates on their units and Nadcon/Connad83 publish the TM zone coordinates... but not [REDACTED].

*I emailed [REDACTED] back today complimenting JAVAD on their professional quick turnaround on my problem. Doug Carter had the field savvy to finesse the problem and get it into Vladimar's hands where it was quickly dealt with. The Javad process took about ten days back and forth with field checking and all. **It was a VERY pleasant experience dealing with the professional geodetic JAVAD engineers.***

As county surveyor, I will continue to reject any plats brought forward done in that zone trying to use another county coordinate system. Our Minnesota statute requires plat be done within 0.02' accuracy so I believe I have firm ground upon which to stand.

In fairness, I await [REDACTED] resolution of the process. I explained the JAVAD methodology and results. Hopefully, sometime soon, they will support the NGS published datum and upgrade their units for their clients.

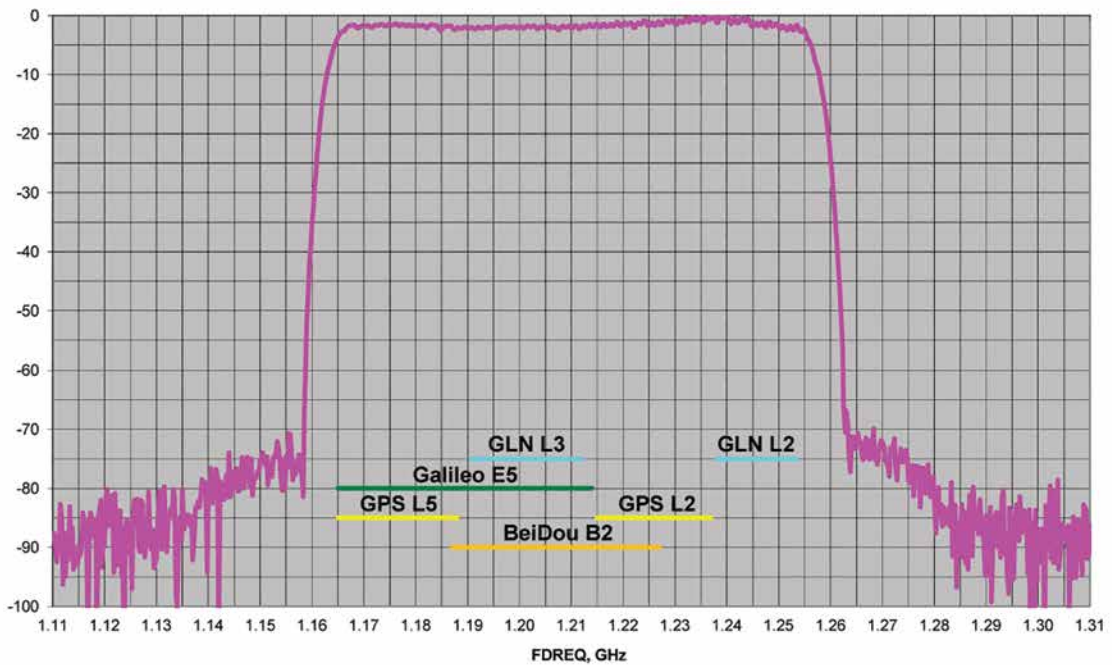
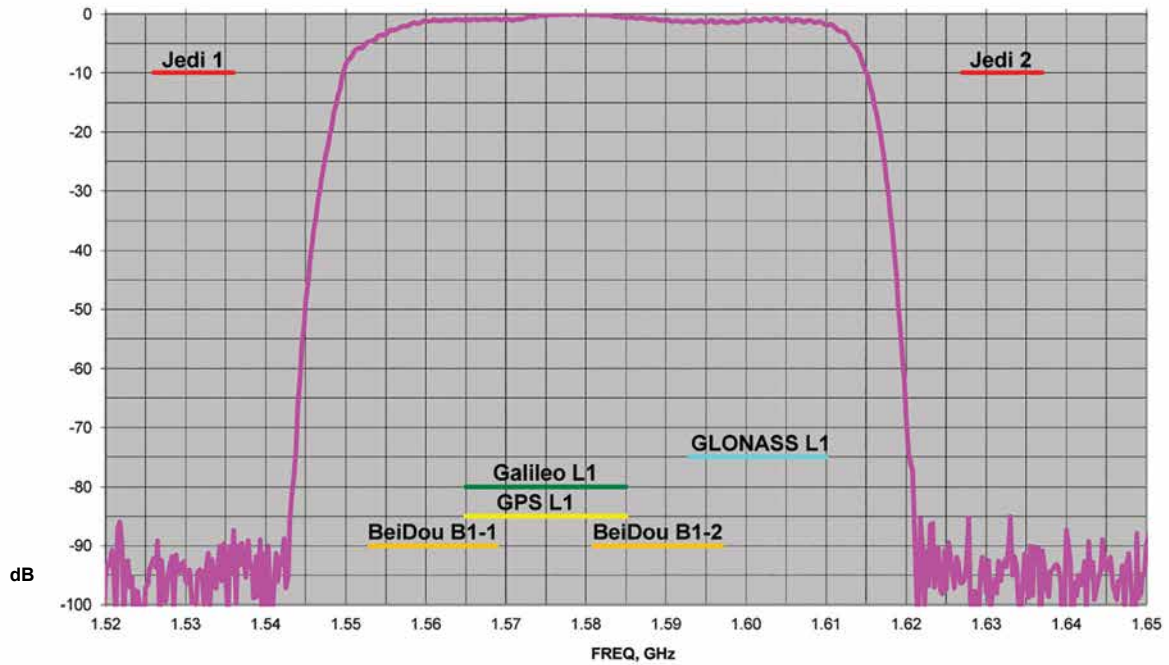
Wayne Hensche



J-Shield

In case the Jedi returns

\$450



J-Shield of TRIUMPH-LS
protecting all GNSS Bands.

TRIUMPH-1M



864 channel chip, equipped with the internal 4G/ LTE/3G card, easy accessible microSD and microSIM cards, includes "Lift & Tilt" technology.

TRIUMPH-2



Total 216 channels: all-in-view (GPS L1/L2, GLONASS L1/L2, SBAS L1) integrated receiver.

The one and the only Digital Radio Transceiver in the world!

Unique adaptive digital signal processing, which has benefits: the full UHF frequency range and all channel bandwidths worldwide • the best sensitivity, dynamic range, and the highest radio link data throughput • embedded interference scanner and analyzer • compatibility with another protocols. Cable free Bluetooth connectivity with GNSS receivers and Internet RTN/VRS access via embedded LAN, Wi-Fi, and 3.5G

And all this with competitive prices!

HPT435BT/HPT135BT/HPT225BT*



\$2,710

35 W UHF/VHF Transceiver

HPT404BT/HPT104BT/HPT204BT*



\$1,640

4 W UHF/VHF Transceiver

HPT401BT/HPT101BT/HPT201BT*



\$2,040

1 W UHF/VHF with internal battery

L-Band/Beacon*



\$1,550

Receivers for multiple applications

JLink 3G LTE BAT*



\$2,735

Web-interface Wi-Fi, Ethernet, 3.5 G, UHF/VHF/FH915, internal battery

OEM Solutions



\$840

902-928, 360-470, 225-255, 138-174 MHz

*Power, data cables and antenna are included.