

You've come a long way, survey...



June 30, 2010 see  
[WWW.JAVAD.COM](http://WWW.JAVAD.COM)  
for the news!

GPS + GLONASS + Galileo

**TRIUMPH 1**

216  
channels  
TRIUMPH Technology

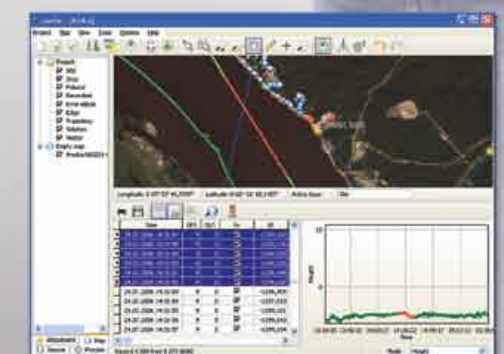


**GISmore**

stand-alone or  
inside the hat



**Giodis**  
Full-featured office  
post-processing software



**Justin**  
A comprehensive Survey  
and GIS software

You've >

come >



In 1983 I co-pioneered high precision GPS at Trimble, introducing the four-channel **Trimble 4000-S** geodetic receiver. I single-handedly wrote its complete software. It was the first commercial GPS geodetic receiver and it changed the geodetic survey industry.



I founded Ashtech and in 1989 we introduced the first All-in-One, All-in-View 12-channel **Ashtech L-12** GPS receiver, followed by **Ashtech Z-12**. These were the first truly portable geodetic receivers. We were also the first to integrate GPS and GLONASS satellites.

June 30, 2010...

three new

a long way, >

survey.



In 1998 I founded Javad Positioning Systems and introduced **Legacy**, **Odyssey**, and **Regency** GNSS geodetic products, followed by the 76-channel **Prego** and **HiPer** receivers. Other companies later copied HiPer. Today many GNSS receivers look like it.

revolutionary



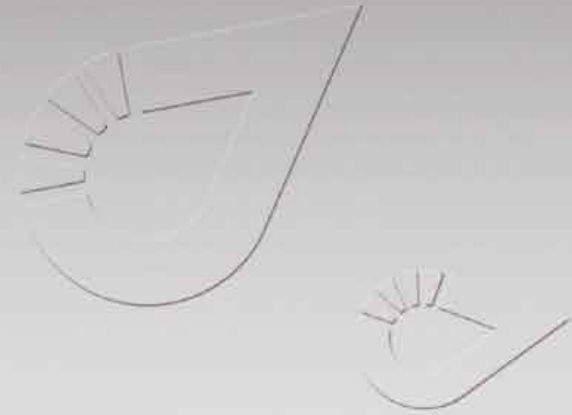
In 2007 I founded Javad GNSS and introduced 216-channel **TRIUMPH** products and their OEM versions of **ALPHA**, **DELTA**, and **SIGMA**. We are again the first to commercially offer receivers which track current and future Galileo Satellites.

*Javad Ashjaee*

products!

# 4x4... ALL WILL DRIVE... RTK!

## TRIUMPH-4x

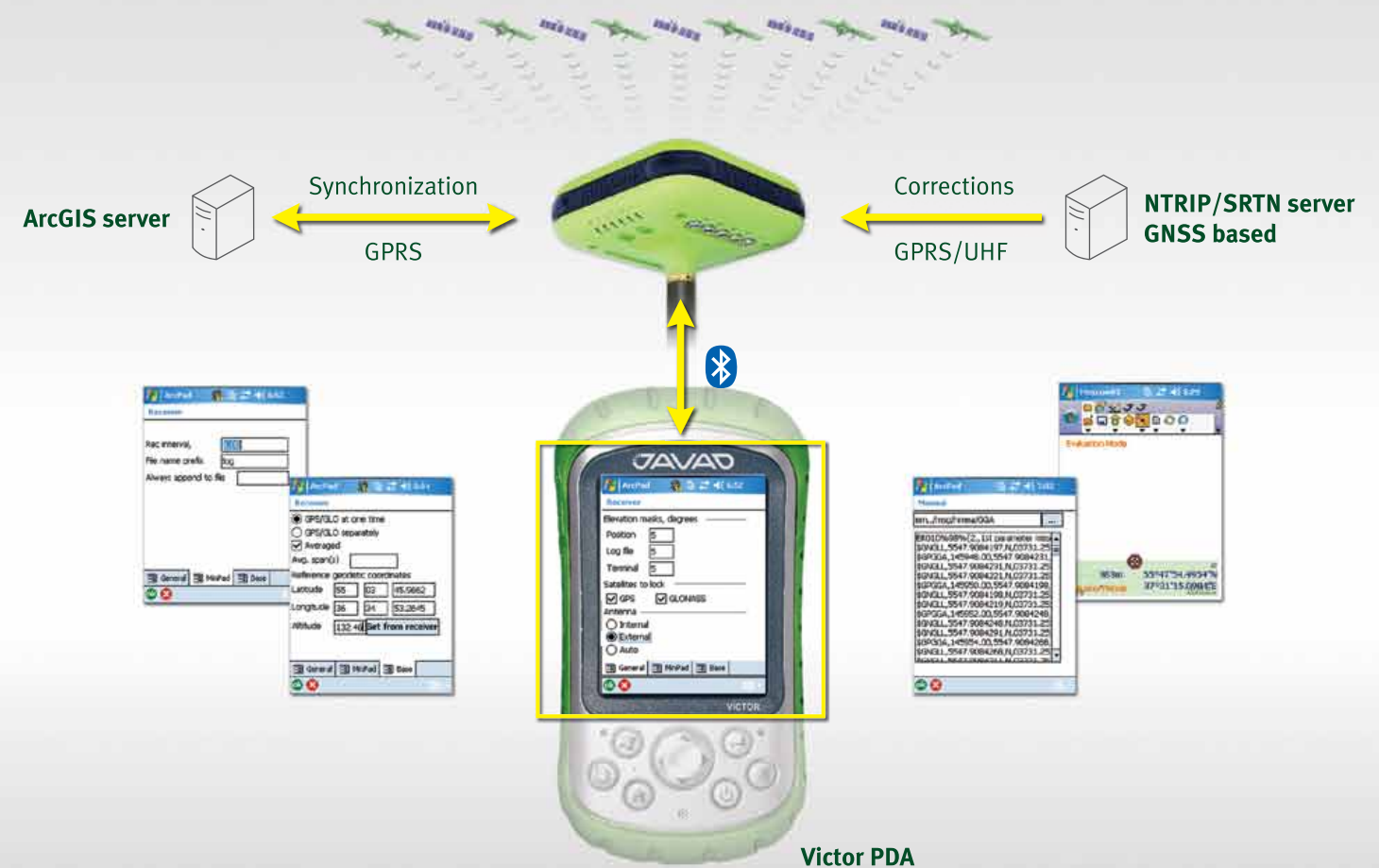


**Tracy**  
A versatile and powerful field software

## JAVAD ArcPad Extension

In response to a long-standing request from ESRI, JAVAD GNSS is pleased to announce that ArcPad users can now communicate directly with ESRI ArcGIS Server via our Triumph receiver so no additional devices (external radio) or settings are required. Real-time centimeter-level positioning is now possible in the field for ArcPad users.

- JAVAD ArcPad Extension enhances the spectrum of ArcPad's surveying capabilities by adding state of the art JAVAD GNSS solutions. JAVAD ArcPad Extension provides a full range of functions to control the GNSS receiver and manage the surveying process.
- JAVAD ArcPad Extension establishes a connection to the receiver via serial, USB, or Bluetooth and configures the base station parameters that govern the RTK and UHF radio setups, and GSM modem settings.



- Quality control of real-time positioning results are assured in the field. The JAVAD GNSS Victor PDA displays the status/process progress continuously via the Bluetooth connection to the receiver.
- Advanced RTK accuracy and ArcPad vector/raster map visualization capabilities deliver reliable object positioning and a new level of job control in the field.
- JAVAD ArcPad Extension is an optimal ESRI-compatible solution for a wide variety of civil engineering or cartography tasks where centimeter level accuracies are required. At the core of this solution lies highly integrated JAVAD GNSS technology optimized for use with ESRI's GIS software.

Please see [www.javad.com](http://www.javad.com) for details.