



JAVAD
WWW.JAVAD.COM

TRIUMPH 1 TRIUMPH – 4X *in focus*

216 channels



**Better than 30 cm GIS... instantly
or 5 cm static**



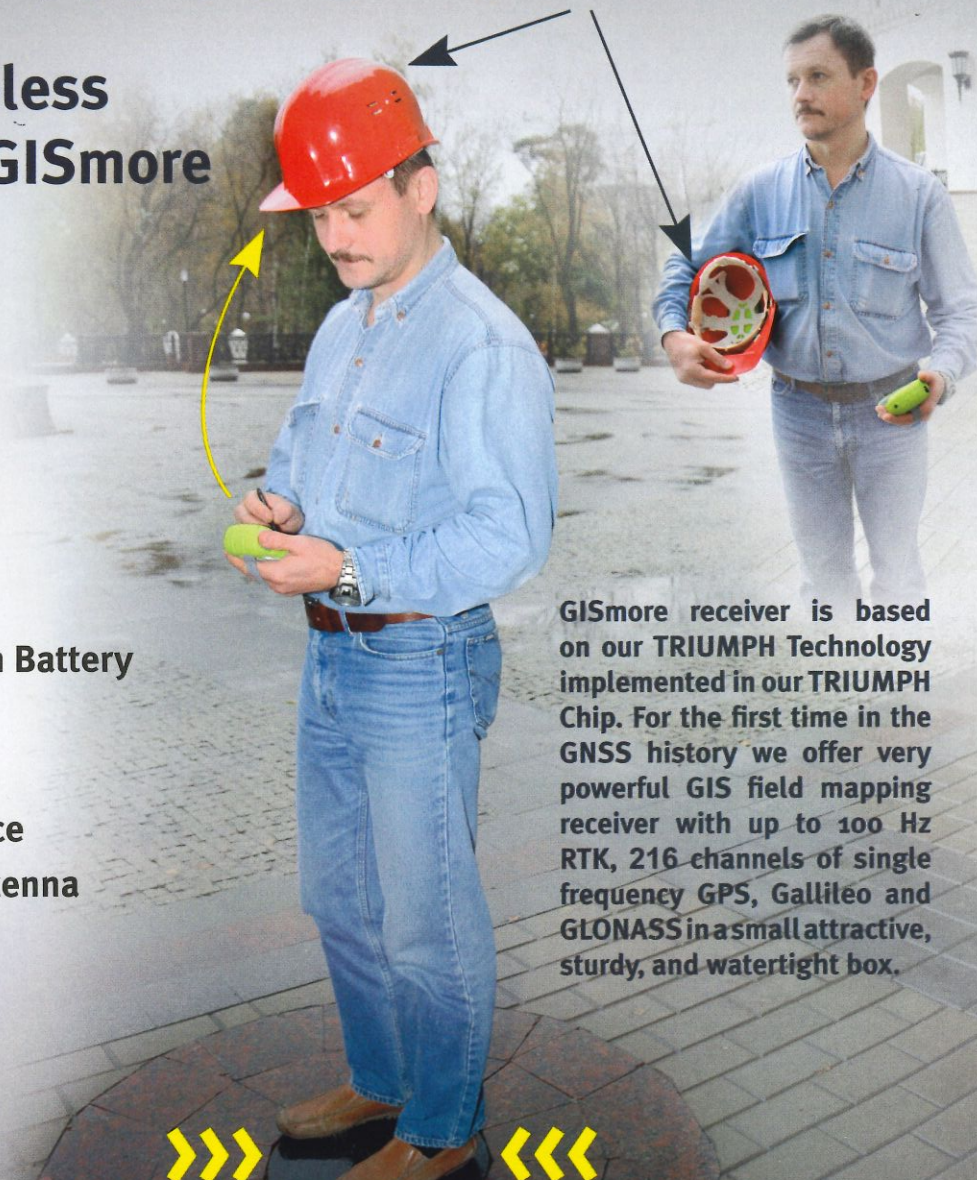
Actual size

GISmore **stand-alone or inside the hat**

**Bluetooth wireless
connection to GISmore**

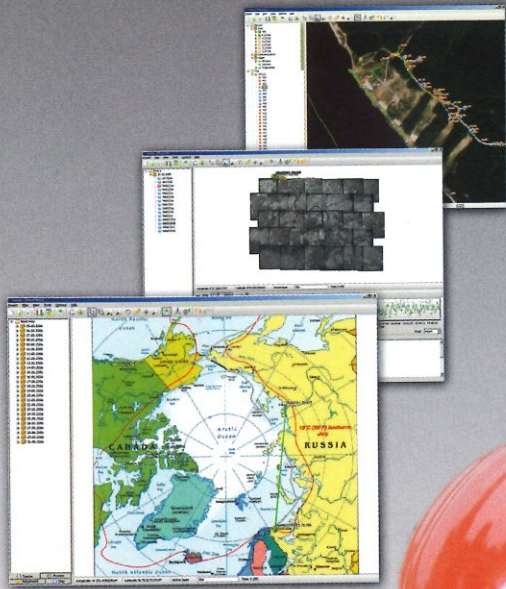
- GPS L1
- Galileo E1
- GLONASS L1
- 100 Hz update rate
- 100 Hz update rate
- RAIM
- WAAS/EGNOS
- Rechargeable Li-Ion Battery
- GNSS Antenna
- GSM Module
- Bluetooth® Interface
- Bluetooth/GSM Antenna

**Many
ways
to use**



GISmore receiver is based on our TRIUMPH Technology implemented in our TRIUMPH Chip. For the first time in the GNSS history we offer very powerful GIS field mapping receiver with up to 100 Hz RTK, 216 channels of single frequency GPS, Galileo and GLONASS in a small attractive, sturdy, and watertight box.

Software solutions for all tasks



Justin

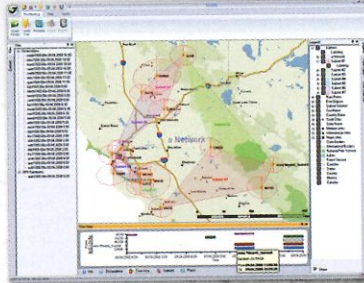
A comprehensive Survey and GIS software

Justin has integrated native tools to use ESRI or MapInfo cartography windows.

It can import data files as well as whole folders. Justin employs special technique to process high rover data rates (up to 100 Hz) using low base data rates. Other features include single epoch static solution, manual postprocessing with time line chart, using vertical profile to filter out suspected data and scientific data analysis and viewer.

Giodis

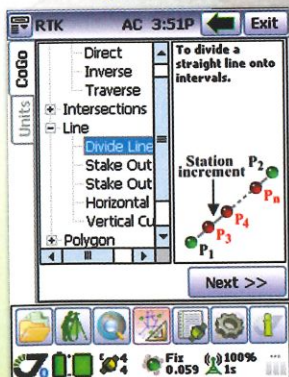
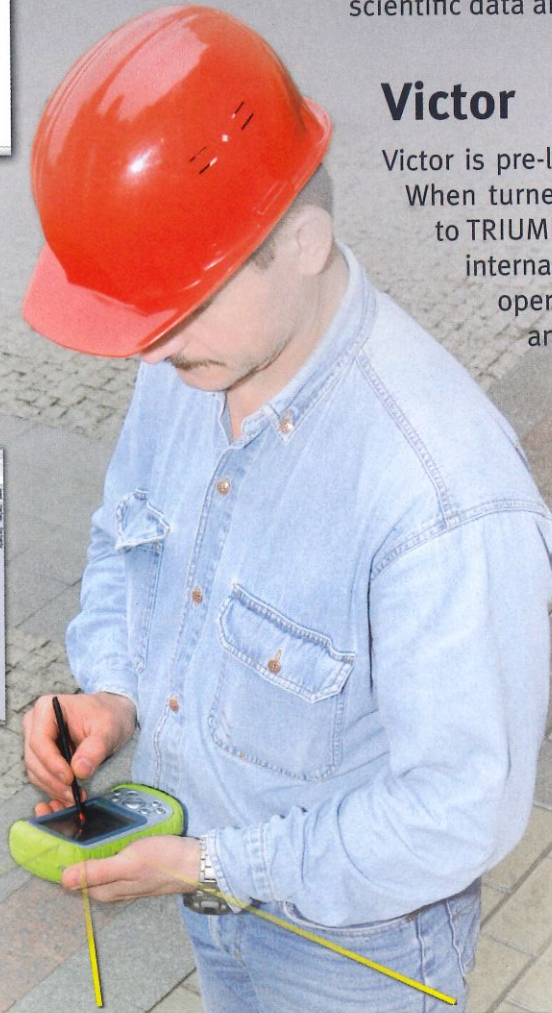
Full-featured office post-processing software



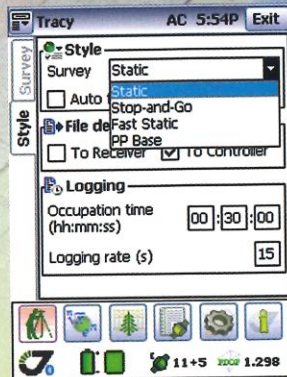
Victor

Victor is pre-loaded with our Tracy field software. When turned on, Victor automatically connects to TRIUMPH-1, TRIUMPH-4X or GISmore via its internal Bluetooth and guides you through field operations. It manages the GNSS receiver and modem operations automatically.

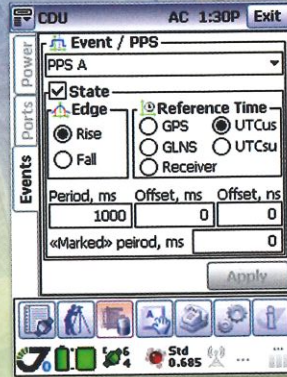
- **Lightweight (17 ounces; 482 grams) magnesium case with easy-to-grip over-molding**
- **Operating temperature -22°F to 122°F (-30°C to 50°C)**
- **Connectivity via built in Bluetooth, USB Host and Client, plus 9-pin RS-232 and optional WiFi and Modems**
- **Rechargeable, field replaceable, Li-Ion battery**
It operates for more than 20 hours on one charge (3 to 5 hours of charging time)



Support for survey and stakeout projects



Static, Fast Static and Stop&Go surveying



Configuration of all hardware

Tracy

A versatile and powerful field software

Software for Windows Mobile OS to control receivers, automated GNSS post processing surveying tasks (Static, Fast Static, Stop&Go, Data Acquisition), and to perform RTK survey and stakeout tasks.

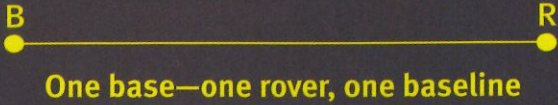
TRIUMPH 1

TRIUMPH



GPS + GLONASS + Galileo

TRIUMPH

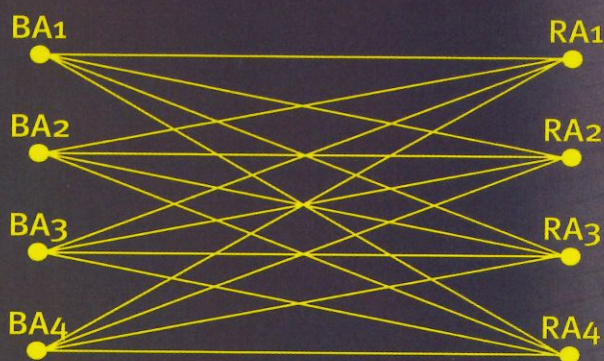


RTK with TRIUMPH – 4x is based on 16 baseline calculations instead of one. See details in www.javad.com.



TRIUMPH – 4x

TRIUMPH



4 base – 4 rover, 16 baselines

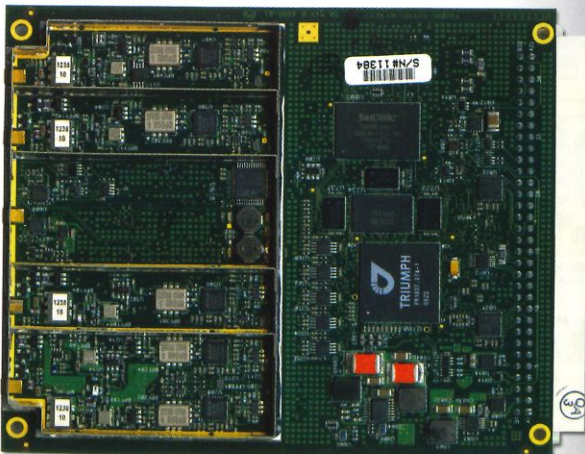


4x4... ALL WILL DRIVE... RTK!

TRIUMPH



Please see www.javad.com for details



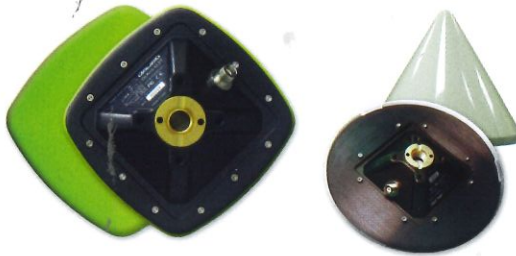
Quattro the
OEM version of
TRIUMPH – 4x

GIS Feature

GRANT-G3T/G3

GrAnt-G3T is a versatile high performance antenna with GPS L1/L2/L5; Glonass L1/L2; Galileo L1/E5

GrAnt-G3
Have similar case as GrAnt-G3T.
With GPS L1; Glonass L1; Galileo E1



SNOW CONE OPTIONS

- Protection Against ESD
- Have good vibration and shock resistance
- Possible options:
N-type connector
TNC on center
Snow Cone

TYRANT-G2T/G3

TyrAnt is our GrAnt antenna integrated with our TR-G3 or TR-G2T OEM board. It is the first and only smart antenna with triple frequency GPS with Galileo option



140x140x62 mm,
0.6 kg



GYRANT

GyrAnt is the GrAnt antenna integrated with Inertial Measurement Unit (IMU) consisting of three accelerometers and three gyros on three axes



140x140x62 mm,
0.6 kg

- Communication is provided via RS422 or CAN interface via M12 8 pin connector

AIRANT

AirAnt is designed to be mounted on aircrafts and applications where low profile and aerodynamic shape are desired. GPS L1/L2/L5; Glonass L1/L2; Galileo L1/E5



120x74x44.5 mm,
0.32 kg

- Overload protection
- Improved rejection out-of-band signal rejection

TRIAANT

TriAnt is small, thin, and rugged high performance GNSS antenna. It is ideal for applications like navigation and surround antennas of TRIUMPH-4X. With GPS L1/L2/L5; Glonass L1/L2; Galileo L1/E5



128x128x55 mm,
0.47 kg

- 2 different mounting options:
female thread 1"-14
3 holes M5 ϕ 50

RINGANT-G3T

is our GrAnt antenna mounted on our own choke ring ground plate. With GPS L1/L2/L5; Glonass L1/L2; Galileo L1/E5



RINGANT-DM

traditional choke ring with Galileo option and Dorne-Margolin element. With GPS L1/L2/L5; Glonass L1/L2; Galileo L1/E5/E6