

TRIUMPH-LS and J-Field

\$12,990



Hands free operation

RTK V6+ support float engine: 0.143m (88725)

9	6	9	6	9	6	7	6	7	6	7	6
Fixed	Fixed	Fixed	Fixed	Fixed	Fixed	Fixed	Fixed	Fixed	Fixed	Fixed	Fixed
0.016m	0.017m	0.022m	0.024m	0.033m	0.022m						
11452	11452	11452	11453	11453	11231						
16%	16%	16%	16%	16%	16%						
88602	88615	88619	88614	88606	88362						

Debug: 0 Reset

Accept Number of Fixed RTK Engines at least 2

Survey Design Line Traj DPOS

Point2 Point3 Point4

RTN RTK

N, m: 14634.535
E, m: 1400.467
U, m: 373.200

FIX 0.036 ft 0 [-7] OK 30

Solution: RTK Fixed 3+50.0 / 0

Dist: 34.32 ft
Azimuth: 58°
3+21.918 / 18.655 ft

36.61 ft M2

659328.7309ft 1734286.5809ft 952.6826ft

J-Field is the embedded application program of TRIUMPH-LS. It has the following unique features for each point surveyed:

- Six parallel RTK engines to maximize solution availability.
- Automatic Engines Resets, verification and validation strategy.
- Several graphical and numerical confidence reports and documentation.
- Voice-to-text conversion for hands free operation and documentation.
- Lift & Tilt and automatic shots for hands free operation
- Visual Stakeout (Virtual Reality)
- "DPOS it" or "Reverse Shift it" features. The most advanced RTK verification.
- Photogrammetry and angle measurements with embedded cameras.
- Automatic or manual photo documentation.
- Automatic screen shots documentation.
- Audio files for documentation.
- Automatic tilt correction.
- Comprehensive HTML and PDF reports
- Comprehensive codes, tags and drawing tools.
- Over 3,000 Coordinate Systems.
- Automatic and free software update via Internet.

- J-Tip
- J-Pod
- J-Pack
- J-Shield

Works Where Others Can't Goes Where Others Won't



Why Javad? Because it works where nothing else will and it has abilities and features that nothing else does.

I got some ridiculous 'fixes' today in some horrible situations. Reset receiver, moved around, etc. Tried to get a bad fix but had a hard time doing it.



**The LS has
increased our
productivity 2:1**

Using licensed professionals for development has been a brilliant idea. Tip of the hat to the programmers and designers that put the original box together it appears to me that they knew where they were going with this years ago.



Since I got the Javad system, I go places NEVER BEFORE possible, and WITH confidence, because, the quality checks are there.

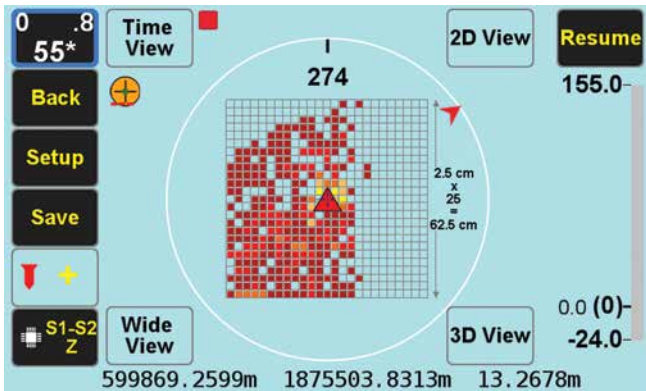


J-Tip

Integrated Magnetic Locator

\$850

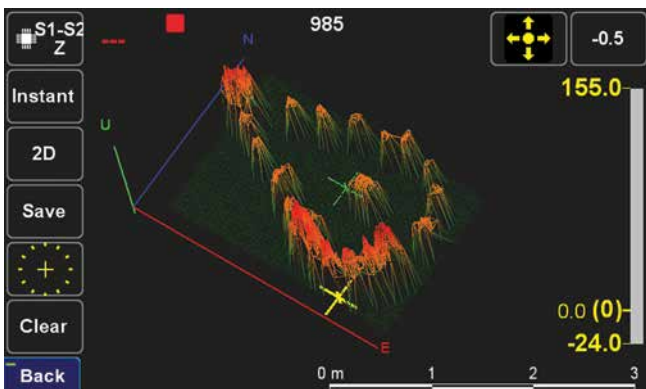
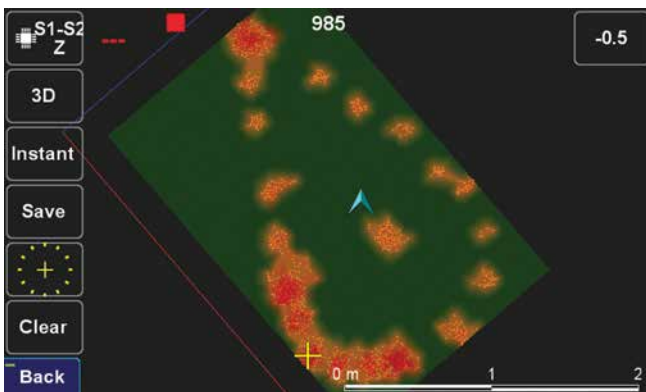
TRIUMPH-LS tags coordinates with magnetic values, It also guides you to top of the item to survey it.



The Mag View focuses only on the mag object with the highest mag value.

The audio and graphical bar on the right side show the magnitude of the magnetic object.

In "Setup" you can select the cell size and the size of the field you want to scan.



The J-Tip has far exceeded my expectations. It is a tool that I have thought about daily my whole career. My thoughts used to be why can't they (whoever they are) make a metal locator that will fit in my pocket. Well, you did it! Yesterday, I was working on a 14 acre boundary survey in steep mountain country. I was able to recover every corner I searched for using the audible tones. I was more effective and efficient than in the past and realized that you have cut the weight and bulk of a metal locator to a fraction of what it was. The J-Tip is lighter than my phone and it fits in my pocket! The locators that I previously used are now collecting dust. They were heavy and cumbersome to tote around. One particular locator that I have used thru the years had a holster and would hang on your side. The back of my knees have taken a beating from that thing slapping the back of them with every step. The J-Tip proved itself to be tough and durable on the mountain survey project. I was also providing topography on a few acres of the site that was covered with green briars, saw briars, kudzu, and very thick. I left the J-Tip on the monopod while working in the brush. Minor scratches are to be expected in that type of environment, so it has a few but the J-Tip took a beating yesterday and worked like a mule. Very impressive!

Adam Plumley, PLS

2D and 3D views of the field show the magnetic objects that have been scanned.

Zooming the 2D and 3D screens can show the shape of the magnetic objects under the ground.

For many sophisticated features of the J-Tip see its Users Manual in www.javad.com

J-Pod

A rugged Transformer-Pod

\$850



Monopod, 8 and 40 sec level vials, compass, Accessory hooks.



Connect legs on demand to make bipod or tripod.



+ Bipod.

Monopod >>> to + Bipod >>> to + Tripod... On demand.



+Tripod.

Rugged, Light, Compact, Easy to level.

- * Detachable landing and resting pads.
- * Mace grips (concrete, asphalt, bricks, soil)



The most stable tripod. It will never collapse, even on wet glass.



Travel mode.



Inside bag.

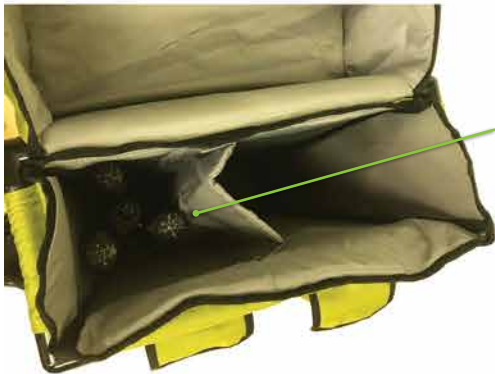
Think of it as a rugged Transformer-Pod, We call it **J-Pod**.

J-Pack

Nice and convenient survey bag

\$290

It was not our job... You asked for it - we did it!



J-Pod

Landing Pads



Javad.....Bravo!!!!

The J-Pack is nicest bag I have ever seen for surveying. I especially like the pocket in the back and all of the places to tie down equipment and stuff.

Adam Plumley, PLS

Ship date - January 2017

See full video "J-Pack & J-Tip in Use" www.javad.com

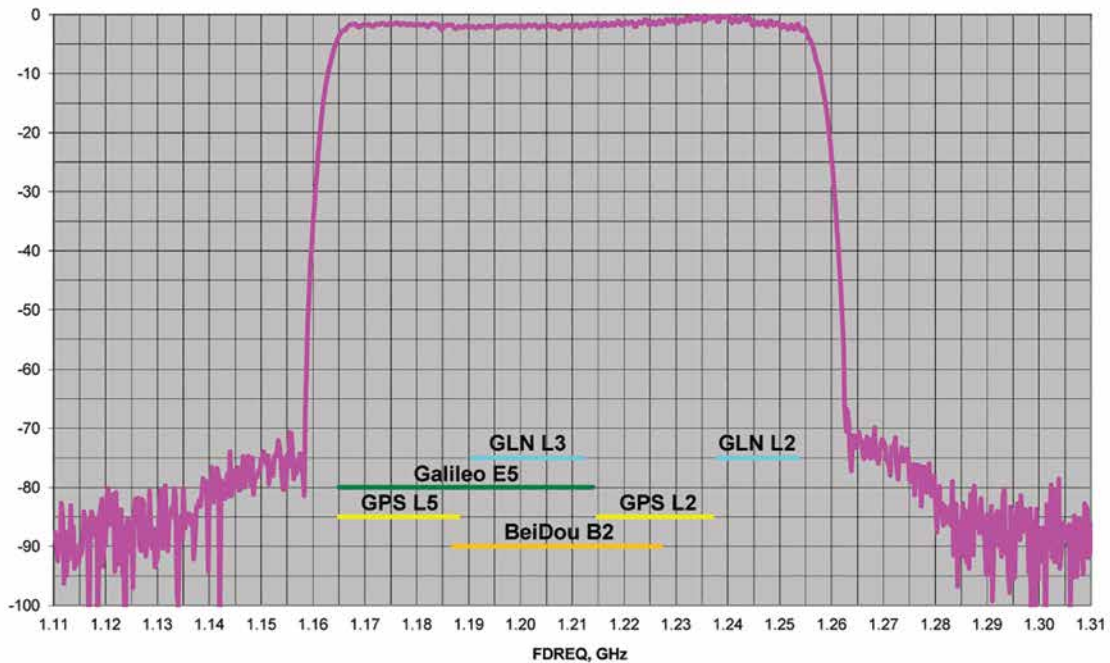
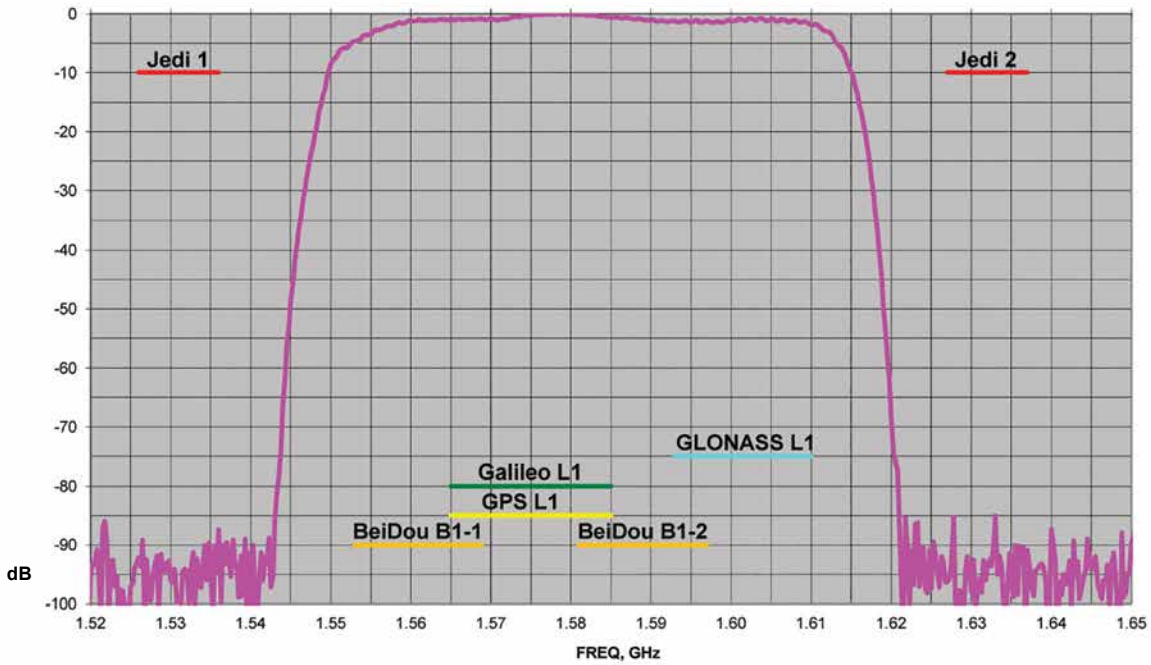




J-Shield

In case the Jedi returns

\$450



J-Shield of TRIUMPH-LS
protecting all GNSS Bands.

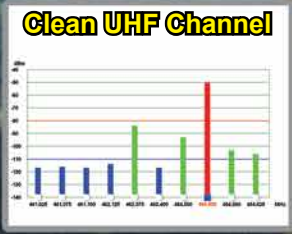
J-Field Software Features

I used "Beast Mode" on a small project yesterday and all I can say is WOW!!!! Did Javad and Red Bull team up to enhance RTK or did my system drink hypercaffeinated coffee when I wasn't looking? Amazing accomplishment/development Javad. I can't imagine using any other GPS equipment.

I surveyed 20 acres today and never used the total station.



The only bitching now is for the crew that has to take out the Hyper V.



Flow	Flow	Flow	Flow	Flow	Flow
0.00m	0.00m	0.00m	0.00m	0.00m	0.00m
0.00m	0.00m	0.00m	0.00m	0.00m	0.00m
0.00m	0.00m	0.00m	0.00m	0.00m	0.00m
0.00m	0.00m	0.00m	0.00m	0.00m	0.00m
0.00m	0.00m	0.00m	0.00m	0.00m	0.00m
0.00m	0.00m	0.00m	0.00m	0.00m	0.00m



Thank you for the most awesome set of equipment I have had the pleasure of running in my 41 years of surveying. I am having the most fun I have ever had!



TRIUMPH-1M



864 channel chip, equipped with the internal 4G/LTE/3G card, easy accessible microSD and microSIM cards, includes "Lift & Tilt" technology.

TRIUMPH-2



Total 216 channels: all-in-view (GPS L1/L2, GLONASS L1/L2, SBAS L1) integrated receiver.

The one and the only Digital Radio Transceiver in the world!

Unique adaptive digital signal processing, which has benefits: the full UHF frequency range and all channel bandwidths worldwide • the best sensitivity, dynamic range, and the highest radio link data throughput • embedded interference scanner and analyzer • compatibility with another protocols. Cable free Bluetooth connectivity with GNSS receivers and Internet RTN/VRS access via embedded LAN, Wi-Fi, and 3.5G

And all this with competitive prices!

HPT435BT/HPT135BT/HPT225BT*



\$2,710

35 W UHF/VHF Transceiver

HPT404BT/HPT104BT/HPT204BT*



\$1,640

4 W UHF/VHF Transceiver

HPT401BT/HPT101BT/HPT201BT*



\$2,040

1 W UHF/VHF with internal battery

L-Band/Beacon*



\$1,550

Receivers for multiple applications

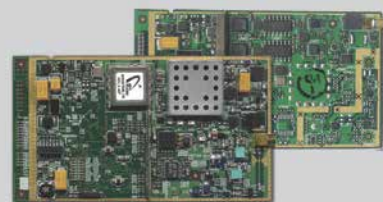
JLink 3G LTE BAT*



\$2,735

Web-interface Wi-Fi, Ethernet, 3.5 G, UHF/VHF/FH915, internal battery

OEM Solutions



\$840

902-928, 360-470, 225-255, 138-174 MHz

*Power, data cables and antenna are included.