

TRIUMPH-LS and J-Field

\$12,990



Hands free operation

RTK V6+ support float engine: 0.143m (88725)

9	6	9	6	9	6	7	6	7	6	7	6
Fixed	Fixed	Fixed	Fixed	Fixed	Fixed	Fixed	Fixed	Fixed	Fixed	Fixed	Fixed
0.016m	0.017m	0.022m	0.024m	0.033m	0.022m						
11452	11452	11452	11453	11453	11231						
16%	16%	16%	16%	16%	16%						
88602	88615	88619	88614	88606	88362						

Debug: 0 Reset

Accept Number of Fixed RTK Engines at least 2

Survey Design Line Traj DPOS

Point2 Point3 Point4

RTN RTK

N, m: 14634.535
E, m: 1400.467
U, m: 373.200

FIX 0.036 ft 0 -7 OK 30

Solution: RTK Fixed 3+50.0 / 0

Dist: 34.32 ft
Azimuth: 58°
3+21.918 / 18.655 ft

36.61 ft M2

659328.7309ft 1734286.5809ft 952.6826ft

J-Field is the embedded application program of TRIUMPH-LS. It has the following unique features for each point surveyed:

- Six parallel RTK engines to maximize solution availability.
- Automatic Engines Resets, verification and validation strategy.
- Several graphical and numerical confidence reports and documentation.
- Voice-to-text conversion for hands free operation and documentation.
- Lift & Tilt and automatic shots for hands free operation
- Visual Stakeout (Virtual Reality)
- “DPOS it” or “Reverse Shift it” features. The most advanced RTK verification.
- Photogrammetry and angle measurements with embedded cameras.
- Automatic or manual photo documentation.
- Automatic screen shots documentation.
- Audio files for documentation.
- Automatic tilt correction.
- Comprehensive HTML and PDF reports
- Comprehensive codes, tags and drawing tools.
- Over 3,000 Coordinate Systems.
- Automatic and free software update via Internet.

- J-Tip
- J-Pod
- J-Pack
- J-Shield



Looking back on 2016, was there a project that you could not have completed or your efficiency would have been significantly reduced without the LS?

Occasionally I will review work that I completed several years ago and it's obvious that the quality of my design work has increased significantly with the addition of the LS and T2.

Javad you have made it possible for me to expand my scope and increase efficiency. Your efforts are greatly appreciated.

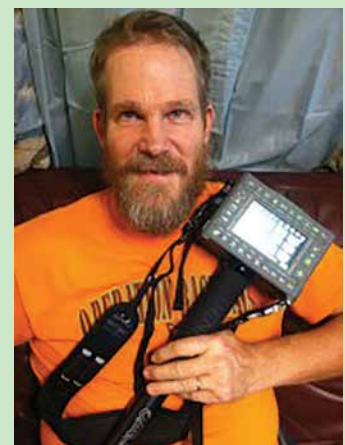
Jim Campi

Northern California
Civil PE

I have to second Jim's comment. I have dreamed of being able to GET all the data I really want, and need. I am bringing home approximately 2x as much data, as with my old system. But, that is not the BEST part of it. The BEST part is the CONFIDENCE, in the shots. THAT is the crown jewel of the Javad LS T-2 combination. Thank you so very much.

Well, we are the SURVEYORS, and we really NEEDED the equipment you hare providing. And, we REALLY appreciate it.

It is the most awesome piece of surveying equipment, and a pleasure to run!



Nate The Surveyor

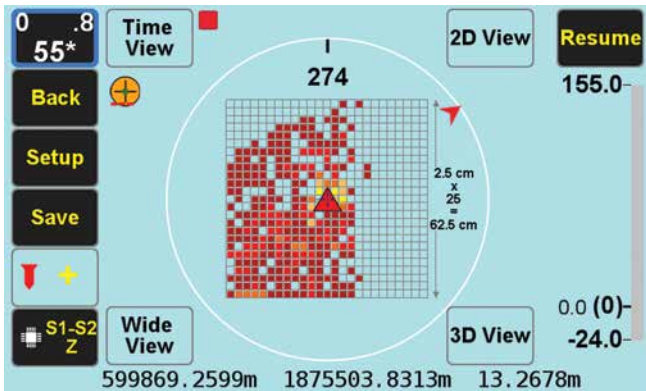
SW Arkansas, USA

J-Tip

Integrated Magnetic Locator

\$850

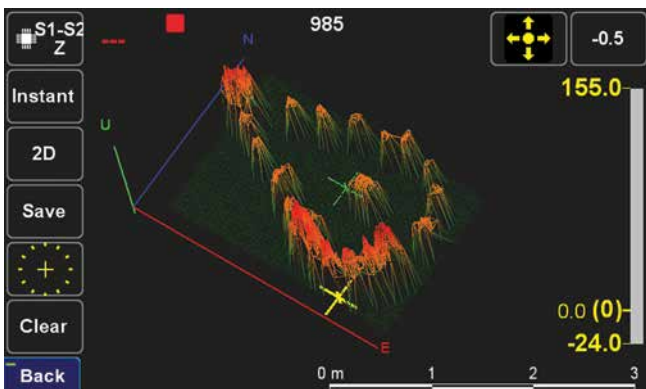
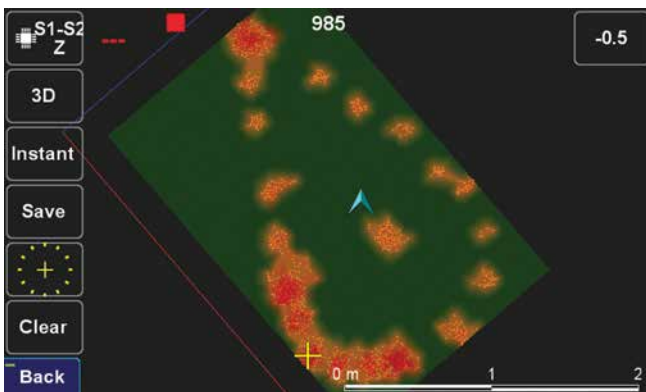
TRIUMPH-LS tags coordinates with magnetic values, It also guides you to top of the item to survey it.



The Mag View focuses only on the mag object with the highest mag value.

The audio and graphical bar on the right side show the magnitude of the magnetic object.

In "Setup" you can select the cell size and the size of the field you want to scan.



The J-Tip has far exceeded my expectations. It is a tool that I have thought about daily my whole career. My thoughts used to be why can't they (whoever they are) make a metal locator that will fit in my pocket. Well, you did it! Yesterday, I was working on a 14 acre boundary survey in steep mountain country. I was able to recover every corner I searched for using the audible tones. I was more effective and efficient than in the past and realized that you have cut the weight and bulk of a metal locator to a fraction of what it was. The J-Tip is lighter than my phone and it fits in my pocket! The locators that I previously used are now collecting dust. They were heavy and cumbersome to tote around. One particular locator that I have used thru the years had a holster and would hang on your side. The back of my knees have taken a beating from that thing slapping the back of them with every step. The J-Tip proved itself to be tough and durable on the mountain survey project. I was also providing topography on a few acres of the site that was covered with green briars, saw briars, kudzu, and very thick. I left the J-Tip on the monopod while working in the brush. Minor scratches are to be expected in that type of environment, so it has a few but the J-Tip took a beating yesterday and worked like a mule. Very impressive!

Adam Plumley, PLS

2D and 3D views of the field show the magnetic objects that have been scanned.

Zooming the 2D and 3D screens can show the shape of the magnetic objects under the ground.

For many sophisticated features of the J-Tip see its Users Manual in www.javad.com

J-Pod

A rugged Transformer-Pod

\$850



Monopod, 8 and 40 sec level vials, compass, Accessory hooks.



Connect legs on demand to make bipod or tripod.



+ Bipod.

Monopod >>> to + Bipod >>> to + Tripod... On demand.



+Tripod.

Rugged, Light, Compact, Easy to level.

- * Detachable landing and resting pads.
- * Mace grips (concrete, asphalt, bricks, soil)



Travel mode.



Inside bag.



The most stable tripod. It will never collapse, even on wet glass.

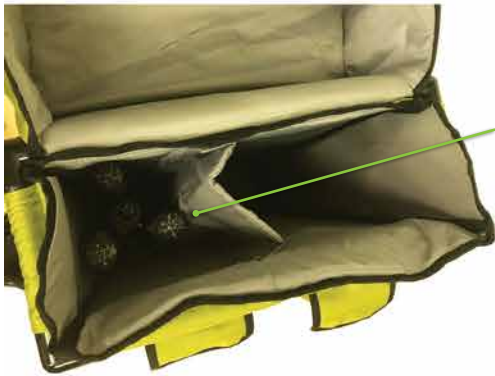
Think of it as a rugged Transformer-Pod, We call it **J-Pod**.

J-Pack

Nice and convenient survey bag

\$290

It was not our job... You asked for it - we did it!



J-Pod



Landing Pads



Javad.....Bravo!!!!

The J-Pack is nicest bag I have ever seen for surveying. I especially like the pocket in the back and all of the places to tie down equipment and stuff.

Adam Plumley, PLS

Ship date - January 2017

See full video "J-Pack & J-Tip in Use" www.javad.com

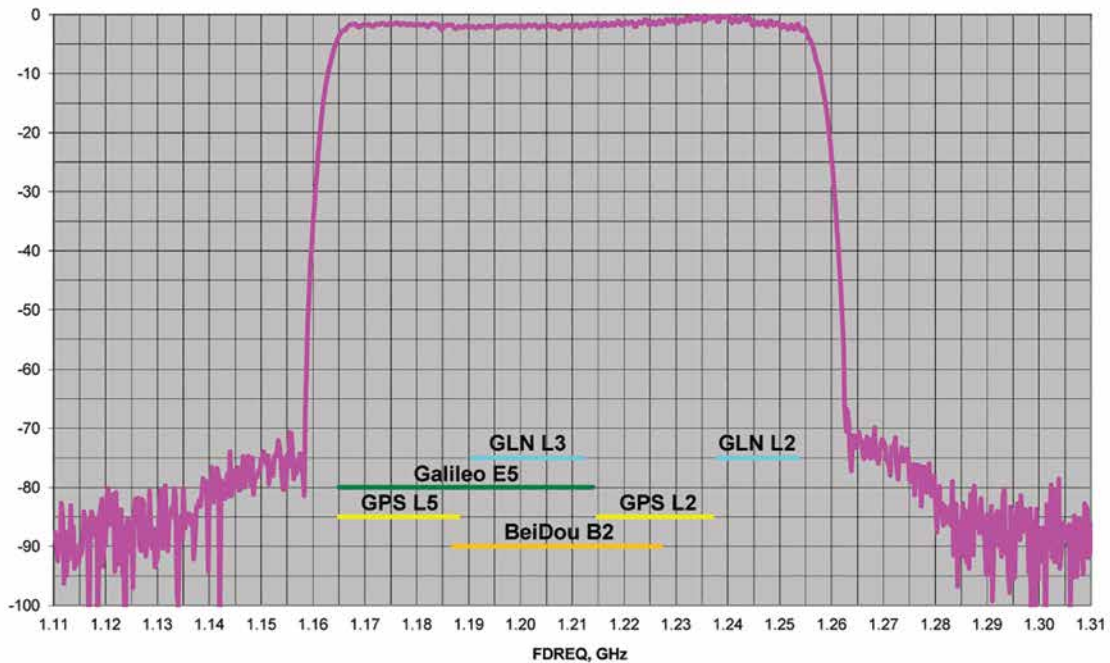
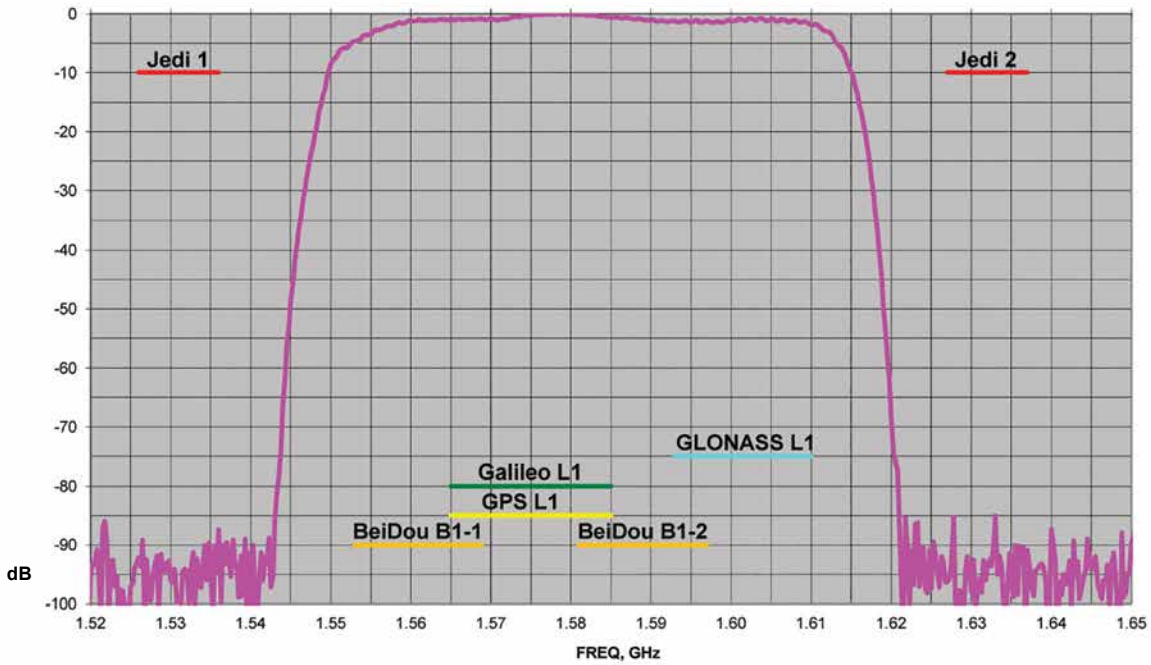




J-Shield

In case the Jedi returns

\$450



J-Shield of TRIUMPH-LS
protecting all GNSS Bands.



To answer this question honestly, I'd have to say basically ALL of them! Sure, there were many that I could've done with the "other" guys equipment in a similar amount of time, but to second what Nate said, the data I acquired and have associated with even those simple jobs is better because of the LS.

That being said, the "simple" jobs (if there is such a thing in Surveying :)), is definitely not where the LS is at its best. The large, heavily canopied, rough terrain jobs, of which we do many of per year, is where this machine sets itself apart - and therefore helps us set ourselves apart from our competition. With the Javad equipment, we can simply do those types of jobs in a third to half the time that we used to. This while still pricing them at relatively the same price that we always have. The same money on a job that takes one half to one third of the

time it used to equals more profit!

I also agree with Jim on the statement that our quality of work has greatly increased due to the LS. We used the "other" guys GPS equipment for years in canopy where many others would not. We've always pushed the limits of where RTK could go. We spent hours some days verifying data on some suspect spots, only to end up sometimes having to run it in with a gun anyway "to be certain". It was definitely a trade off where we saved ourselves time in many areas, but cost ourselves time in others where it just wasn't meant to get RTK GPS. That has completely been taken away with the LS. There's hardly anywhere, especially when leaf cover is off, where it won't get great, reliable, verified, validated RTK. Then, in the few spots it doesn't, the PPK is just the absolute cherry on top of this machine.

I feel very fortunate to be a part of the growing Javad family and with now 20 months in, I shudder to even think about going back to any other kind of equipment!

Darren Clemons

Central Kentucky

- **Steve Hankins:** I am running J Field Pre Release 2.0.5.711. In the field yesterday I noticed the LS would have phantom clicks and random screen changes without and interaction from me. I was able to touch the screen and return to where I was at and complete my task. The screen seemed to be a little sluggish when this would occur but did not become unresponsive. I powered the unit off and rebooted, but that didn't fix the behavior. I then used the A/V button and calibrated the screen, this seemed to help and finished my field work. Later in the evening in the office with the LS on and setting on my desk it started to repeat the phantom clicks, sometimes changing the screen, then the next phantom click was audible only with no screen change. The unit appears to be working correctly in spite of the phantom clicks. Anyone else experienced this, or have any thoughts?

- **Javad:** Hold the A/V hardware button for three seconds. It will recalibrate the touch screen.

- **Steve Hankins:** Thank you sir, and thank you for the most awesome set of equipment I have had the pleasure of running in my 41 years of surveying. I am having the most fun I have ever had!

TRIUMPH-1M



864 channel chip, equipped with the internal 4G/LTE/3G card, easy accessible microSD and microSIM cards, includes "Lift & Tilt" technology.

TRIUMPH-2



Total 216 channels: all-in-view (GPS L1/L2, GLONASS L1/L2, SBAS L1) integrated receiver.

The one and the only Digital Radio Transceiver in the world!

Unique adaptive digital signal processing, which has benefits: the full UHF frequency range and all channel bandwidths worldwide • the best sensitivity, dynamic range, and the highest radio link data throughput • embedded interference scanner and analyzer • compatibility with another protocols. Cable free Bluetooth connectivity with GNSS receivers and Internet RTN/VRS access via embedded LAN, Wi-Fi, and 3.5G

And all this with competitive prices!

HPT435BT/HPT135BT/HPT225BT*



\$2,710

35 W UHF/VHF Transceiver

HPT404BT/HPT104BT/HPT204BT*



\$1,640

4 W UHF/VHF Transceiver

HPT401BT/HPT101BT/HPT201BT*



\$2,040

1 W UHF/VHF with internal battery

L-Band/Beacon*



\$1,550

Receivers for multiple applications

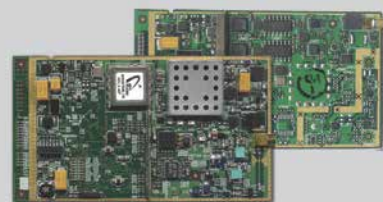
JLink 3G LTE BAT*



\$2,735

Web-interface Wi-Fi, Ethernet, 3.5 G, UHF/VHF/FH915, internal battery

OEM Solutions



\$840

902-928, 360-470, 225-255, 138-174 MHz

*Power, data cables and antenna are included.