



Happy Holidays!



TRIUMPH-1



TRIUMPH-VS, Fully integrated

- GNSS receive,
- High precision Antenna,
- Controller & Software

Victor-VS
Controller &
Software



The reason for our **8-page** advertisements is that we want to **substantiate** our claims of excellence by explaining technical details. We provide the **most accurate**, the **most features**, and the **easiest-to-use** GNSS instruments, period.



We do not have any financial ties to **LightSquared**. Our one technical project with LightSquared ended **last year**. We provide **protection for GNSS bands** and spectrum monitoring and reporting because we believe these are the **right things to do**. We do all these and all advertisements with **our own nickel and dime**. We have no relationship, no arrangements, and no dialogue with LightSquared.

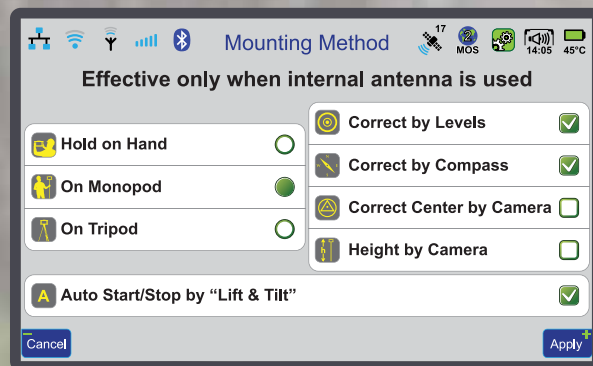
Don't Look! Don't Touch! ... Survey with Lift&Tilt



Many sensors, intelligence, and innovations inside TRIUMPH-VS bring this new **revolution to surveyors.**

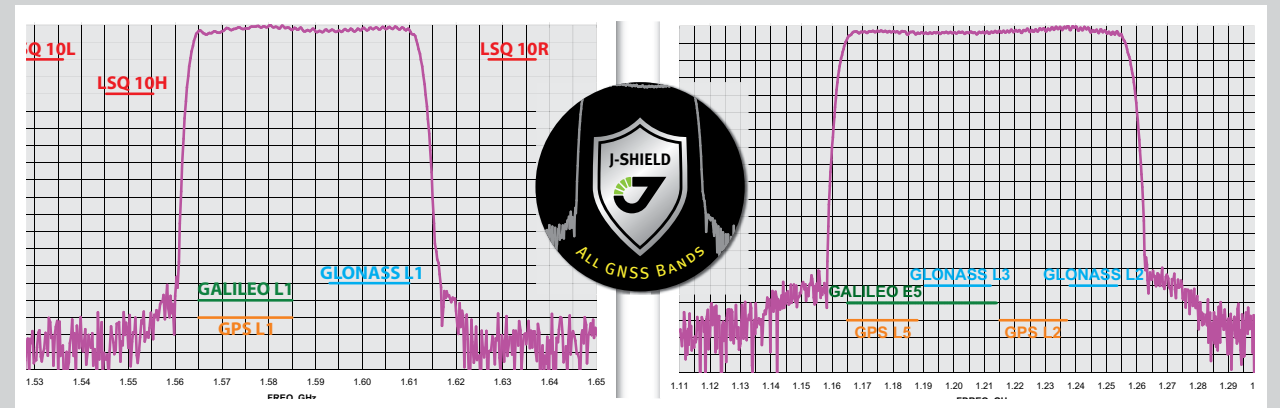
You don't need to look.

You don't need to touch.



J-shield

Our team has been bringing you the latest GNSS technology for the past **30 years.**



Our J-Shield protects **not only** the **GPS L1** band against Light-Squared, but protects **all GNSS bands** against **all current and future** near-band signals.

Visual Stakeout

View your target point on the TRIUMPH-VS screen and walk towards it to stake it.



Six Parallel RTK Engines

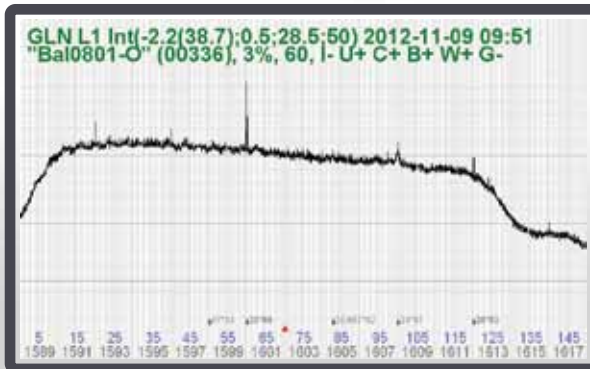
Each of our 6 parallel RTK engines employs different algorithms to calculate solutions and the weighted average of them provides the most robust, accurate, and fastest results.



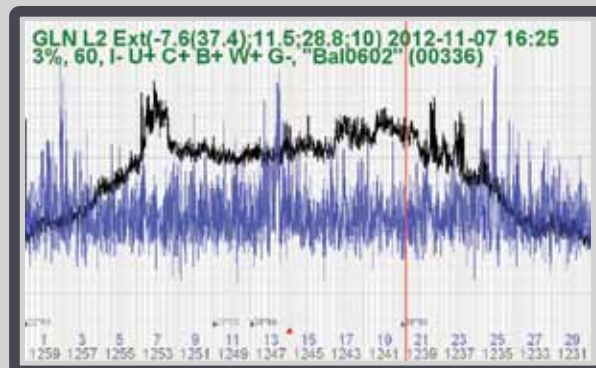
This engine is behind the hood. This is why it is so easy to get the fastest and most reliable RTK solutions.

See **who jams** your GNSS

Now you can **“view” interferences** in your environment before **starting your job** and see if RTK is degraded.



Actual examples of **clean GNSS** environment

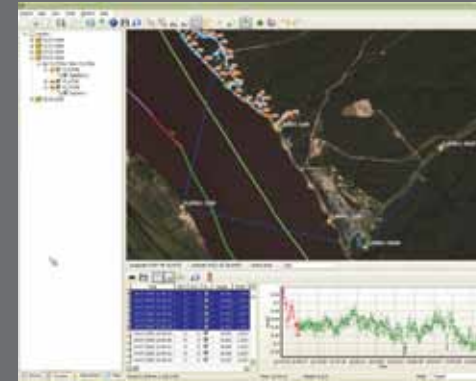


Actual examples of **noisy GNSS** environments. People could not use these satellites and **did not know why**.

Software

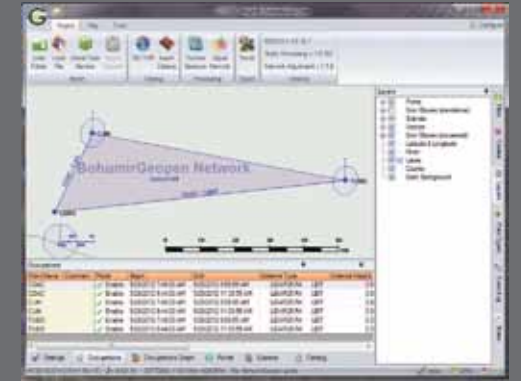
Complete software suite for survey, GIS and control.

Justin



Justin has full range of features for geodetic and surveying tasks.

Giodis



Full-featured office post-processing software for high-precision geodetic and surveying applications

NetView



Application to easily control JAVAD GNSS receivers.

NetHub



Windows® application for controlling GNSS receivers developed by JAVAD GNSS, INC.